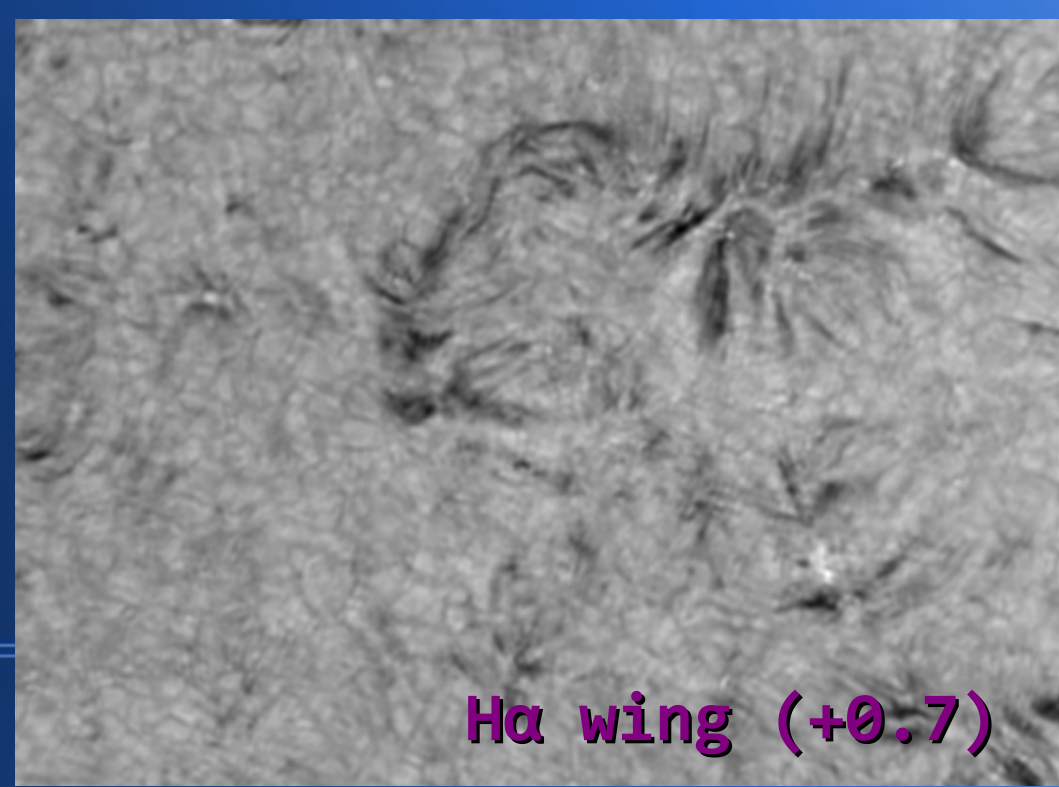
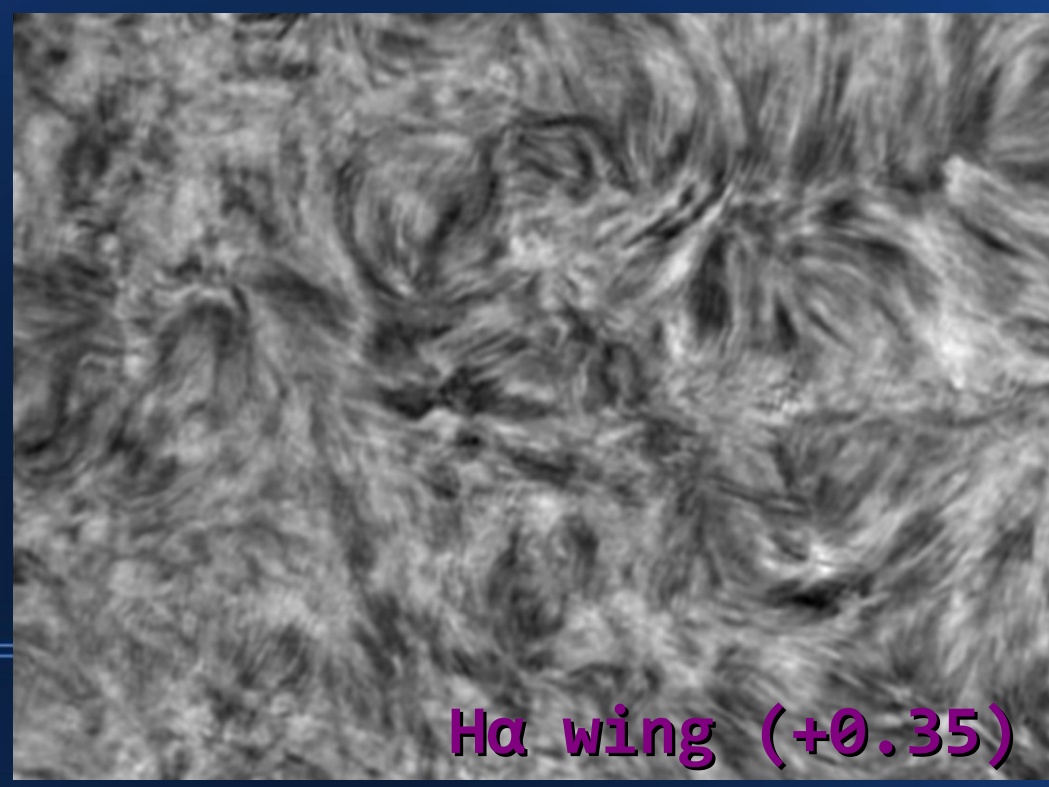
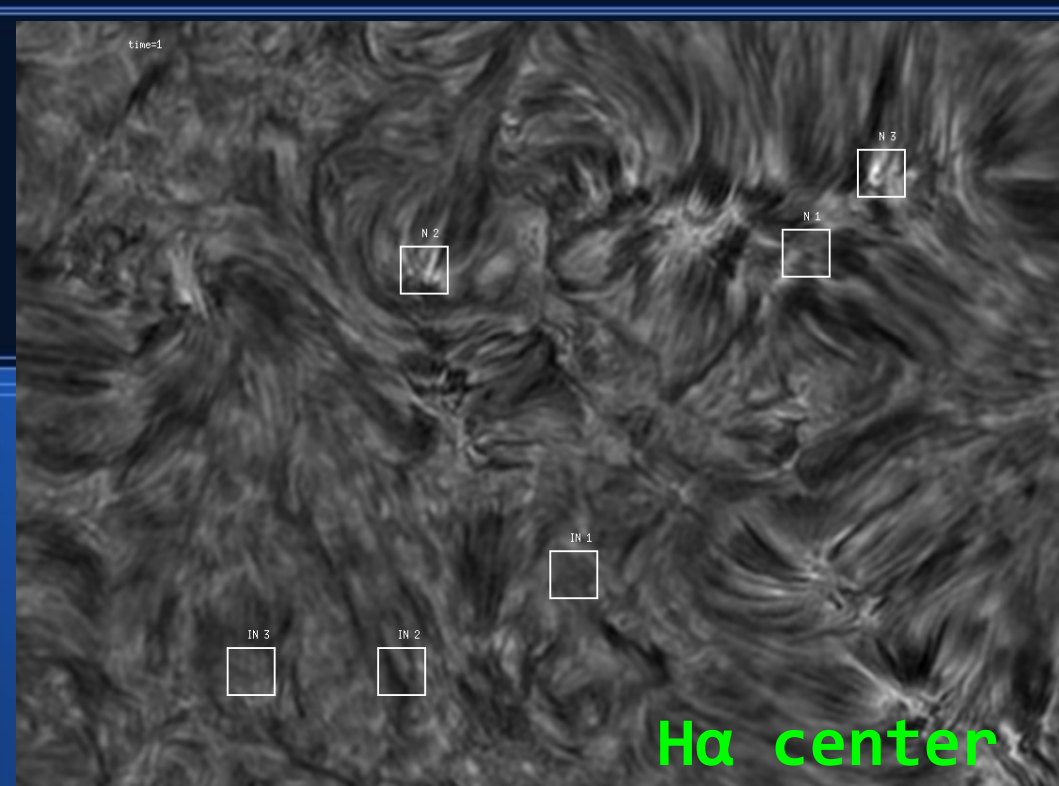
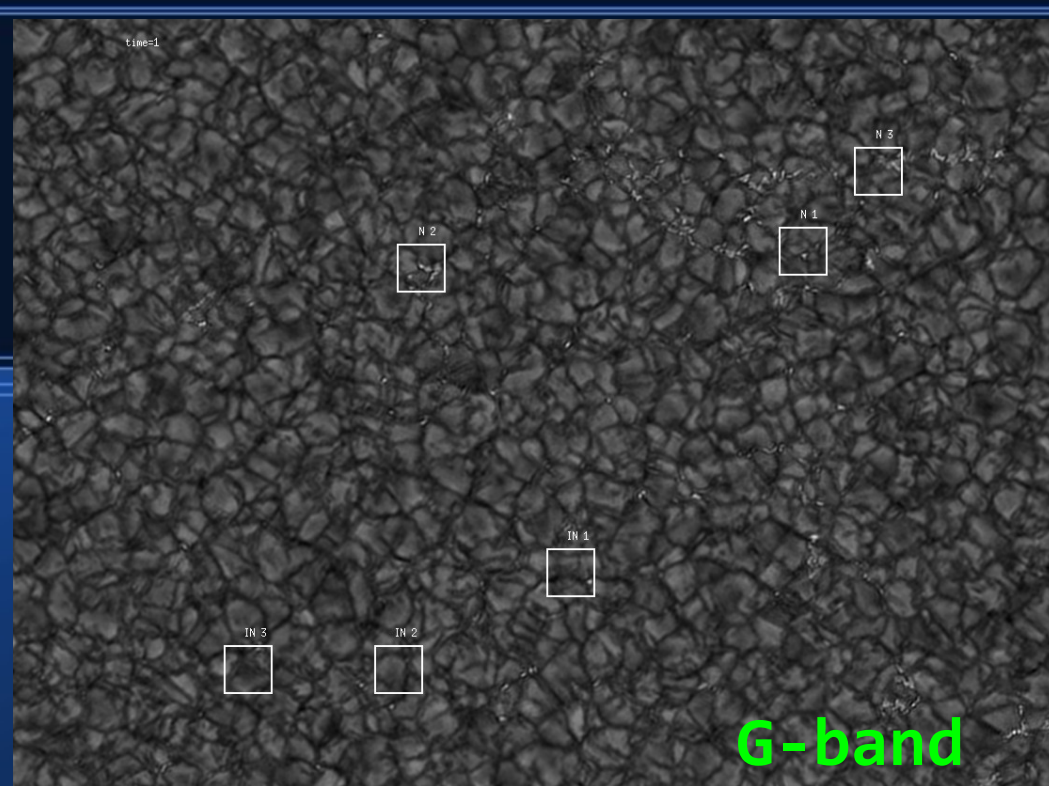


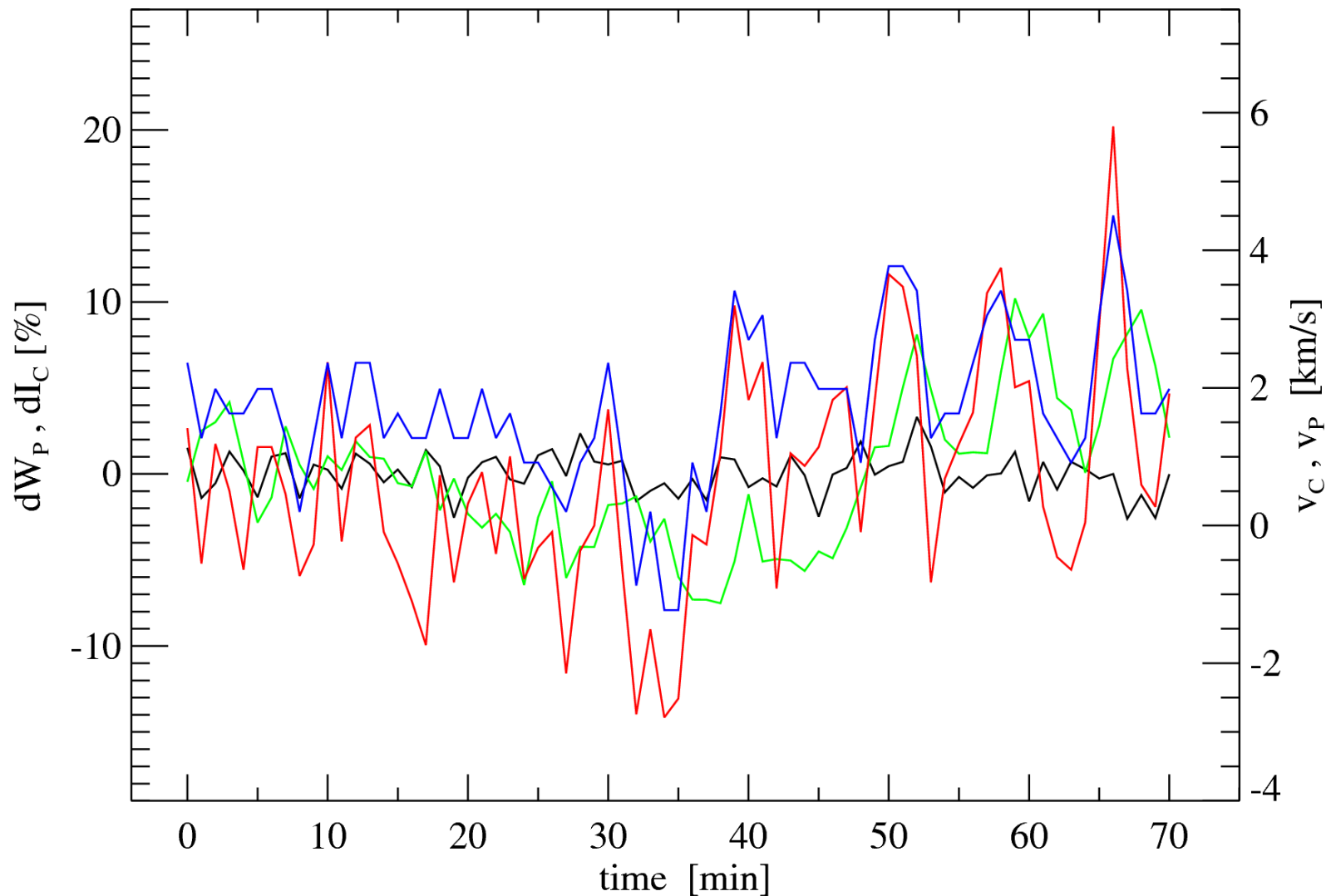
Chromospheric Response of Dynamics of Photospheric G-band Bright Points

Observation and Data Processing

- ◆ DOT – telescop specifications
- ◆ G-band and H α datasets description
- ◆ G-band data processing \rightarrow Utz algorithm
- ◆ spectral characteristics of H α line profile (wp, Ic, vp, vc) + Koza algorithm
- ◆ analysis of time evolution of spectral characteristics of H α line profile \rightarrow autocorrelation + crosscorrelation
- ◆ PICTURES: G-band + H α (center, wing - 2 points)
 $\lambda_{H\alpha} + 0.35 \text{ \AA}$, $\lambda_{H\alpha} + 0.7 \text{ \AA}$



Box B1 - Time variations of spectral characteristics of H α



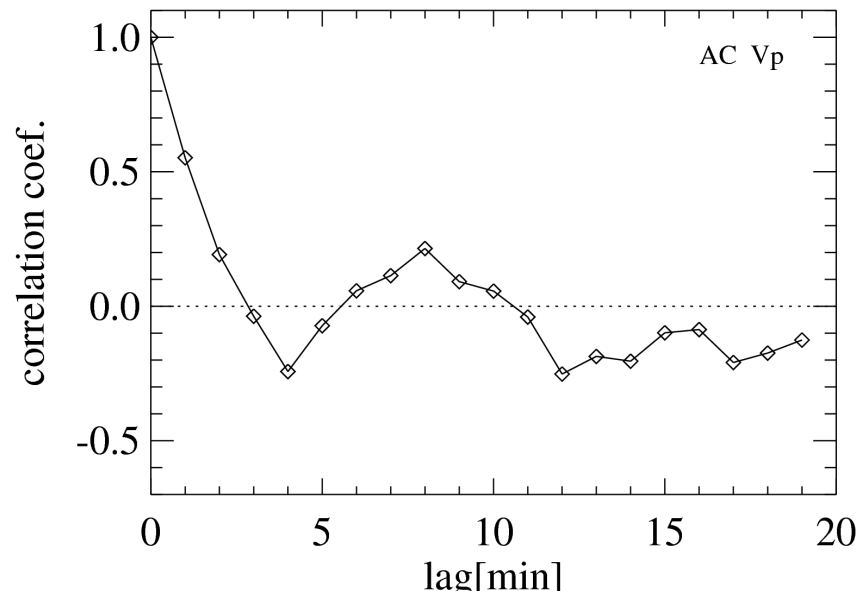
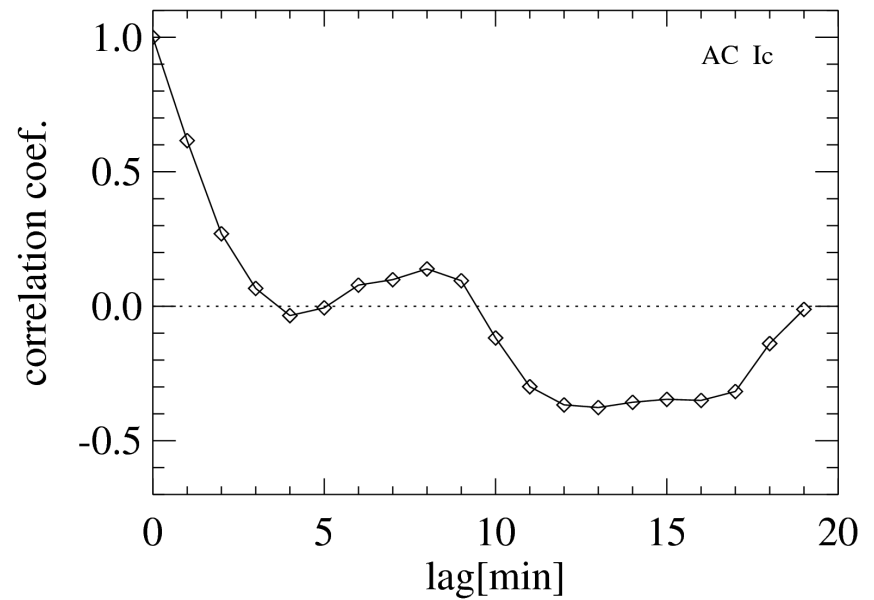
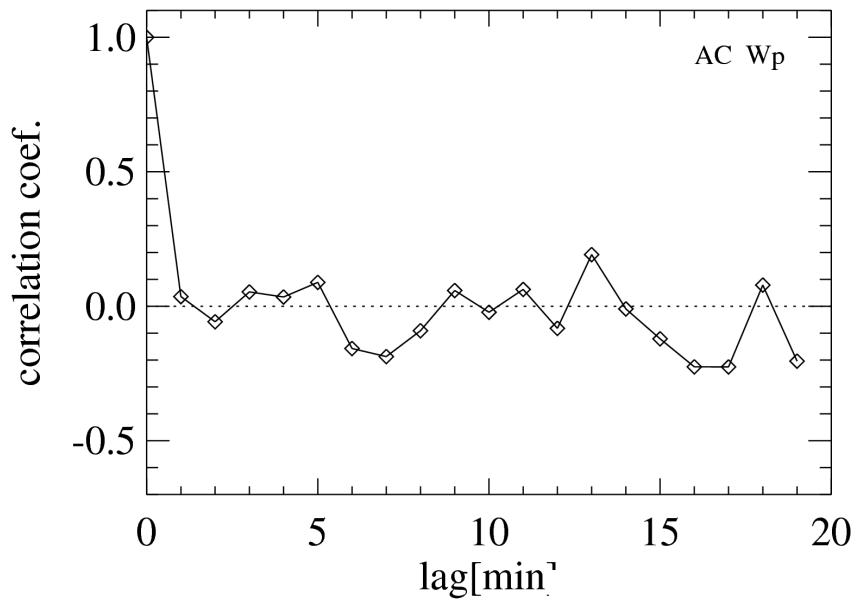
Black - wp

Green - Ic

Blue - vp

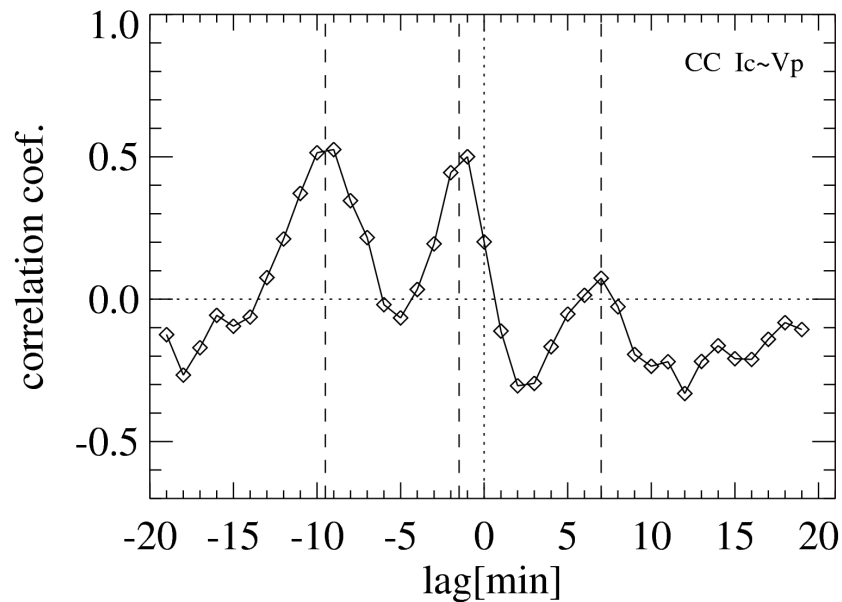
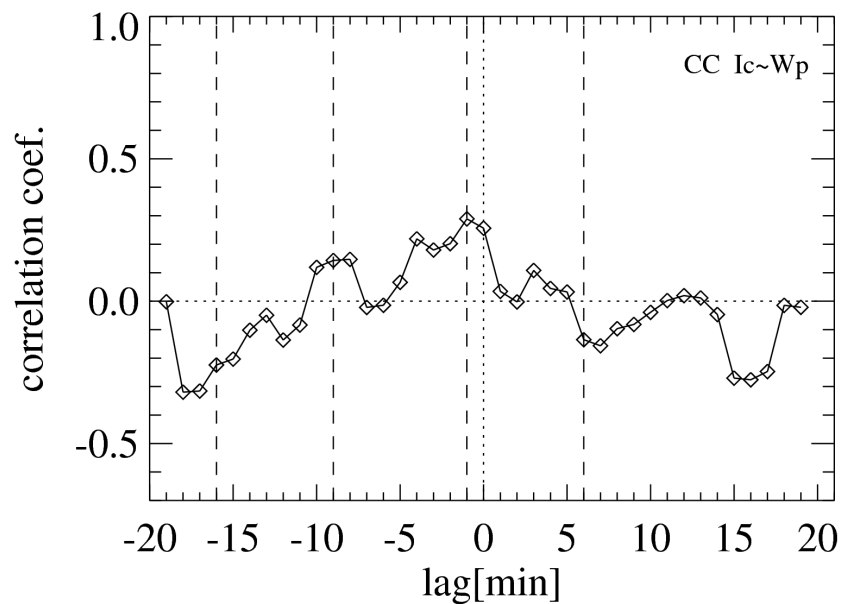
Red - vc

Box B1 - full time span - autocorrelations

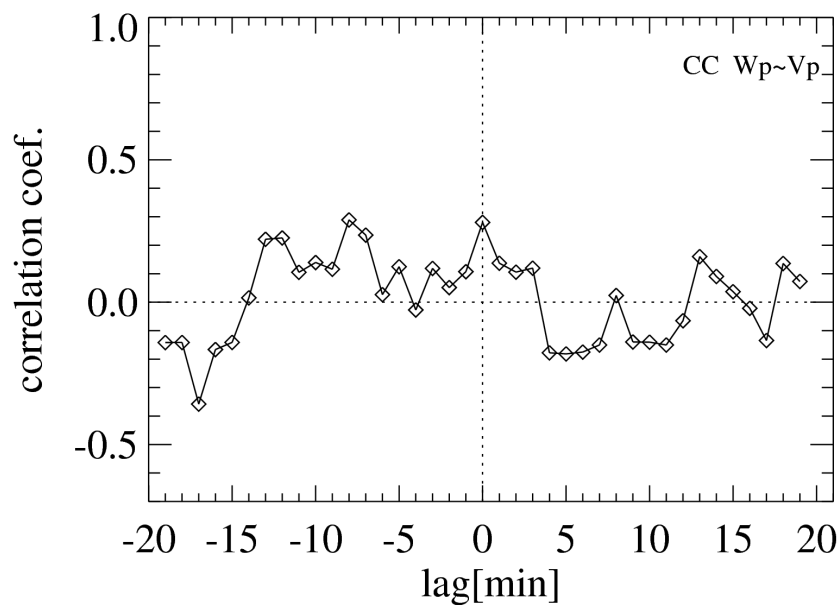


**~8 min
period in
Ic and vp**

Box B1 - full time span - crosscorrelations

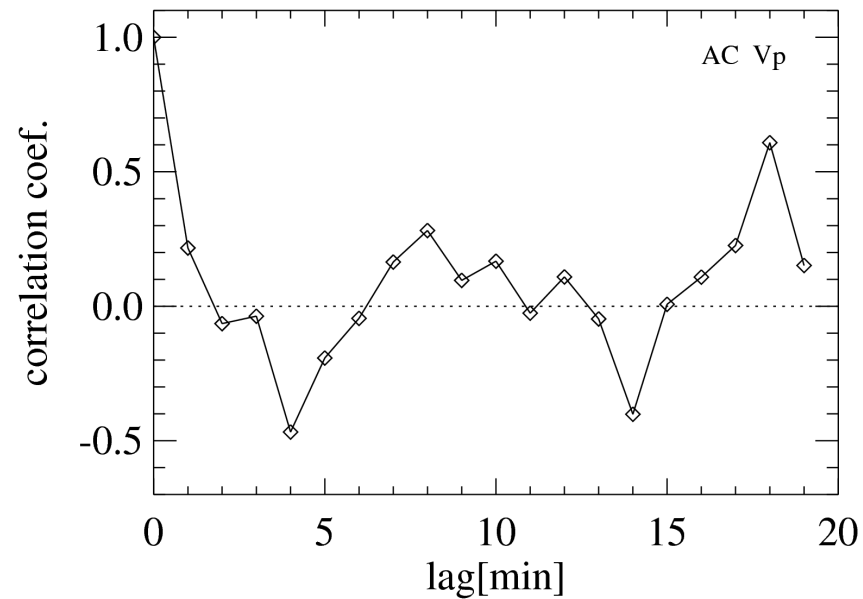
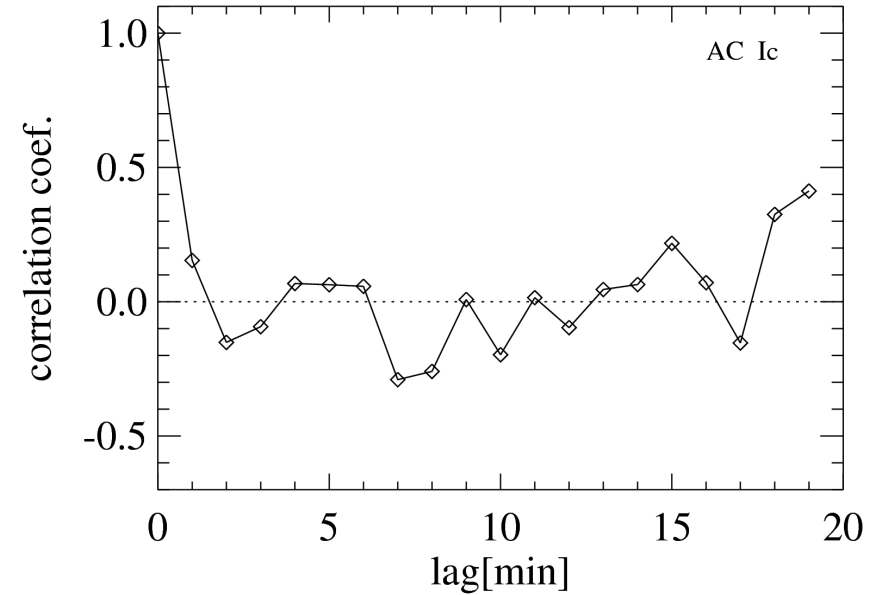
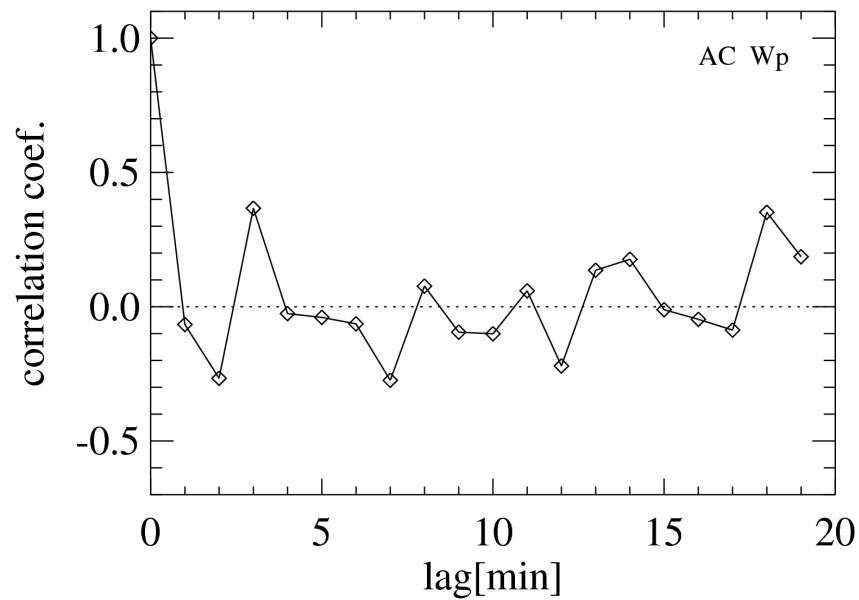


statistically
significant
correlation
between Ic
and vp



Ic behind
vp ~1.5
min

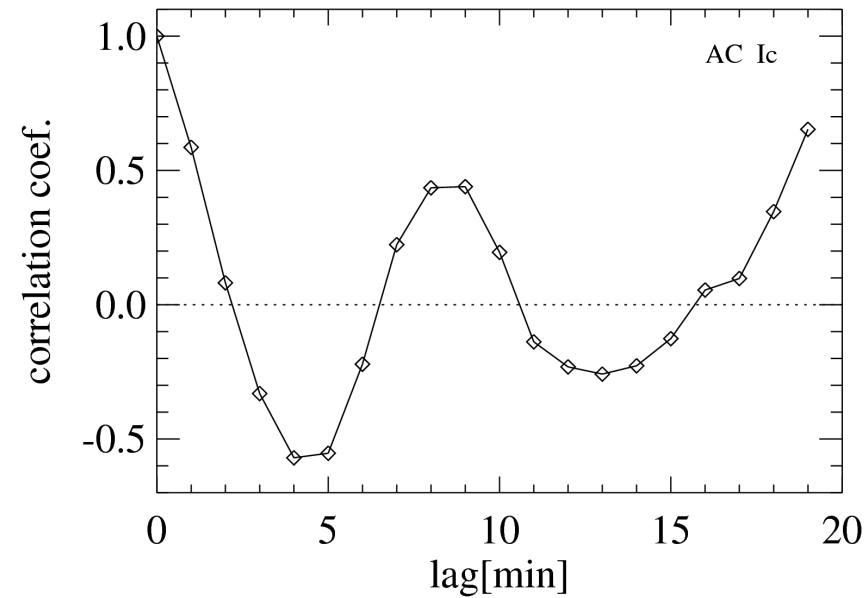
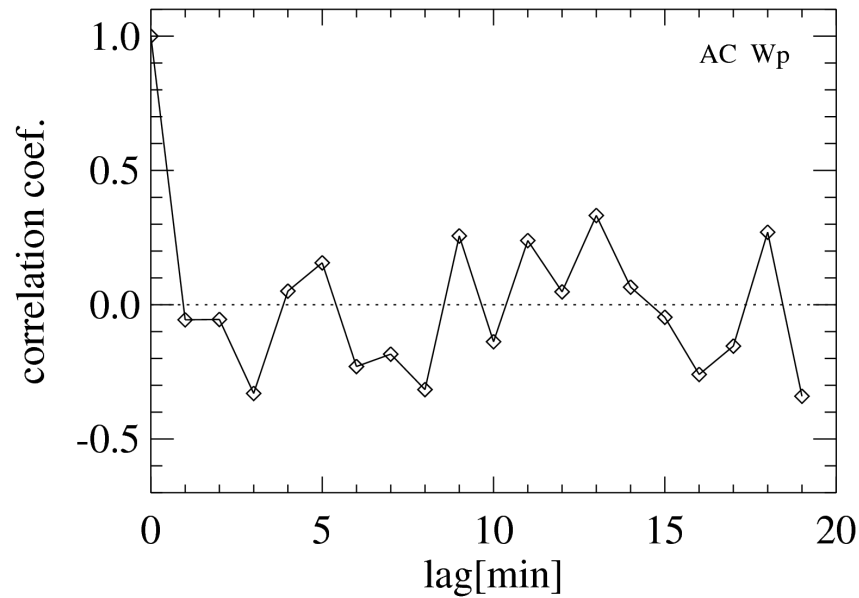
Box B1 - first half (0-35 min) - autocorrelations



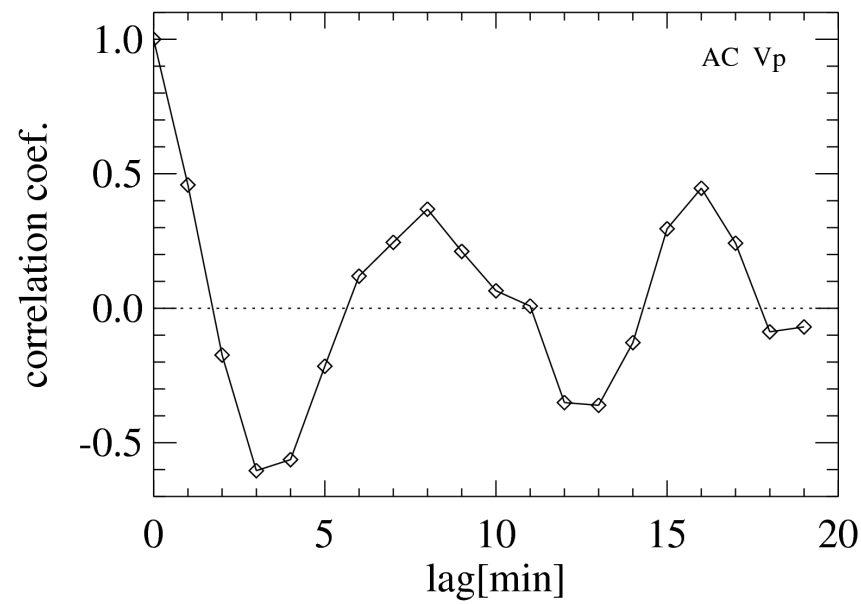
**no
statistically
significant
periods**

Box B1 - second half (36-70 min)

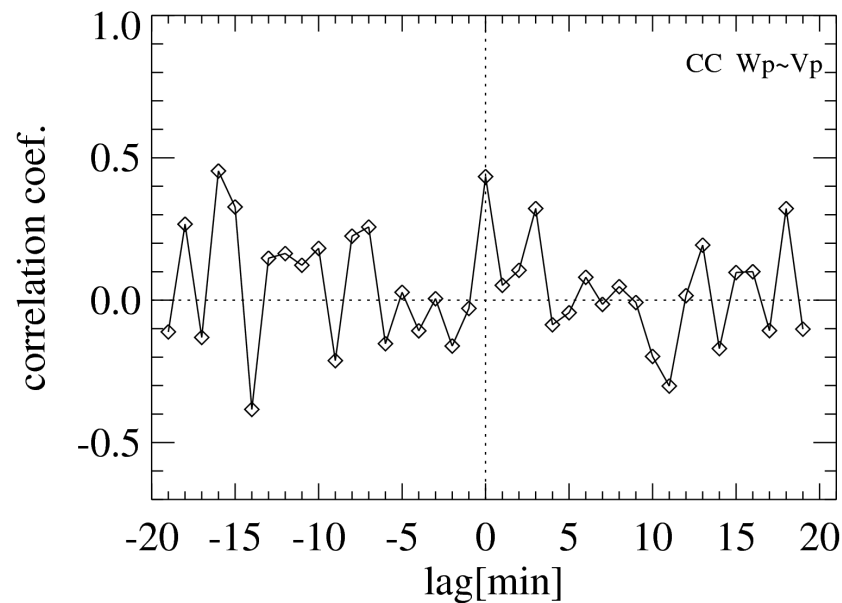
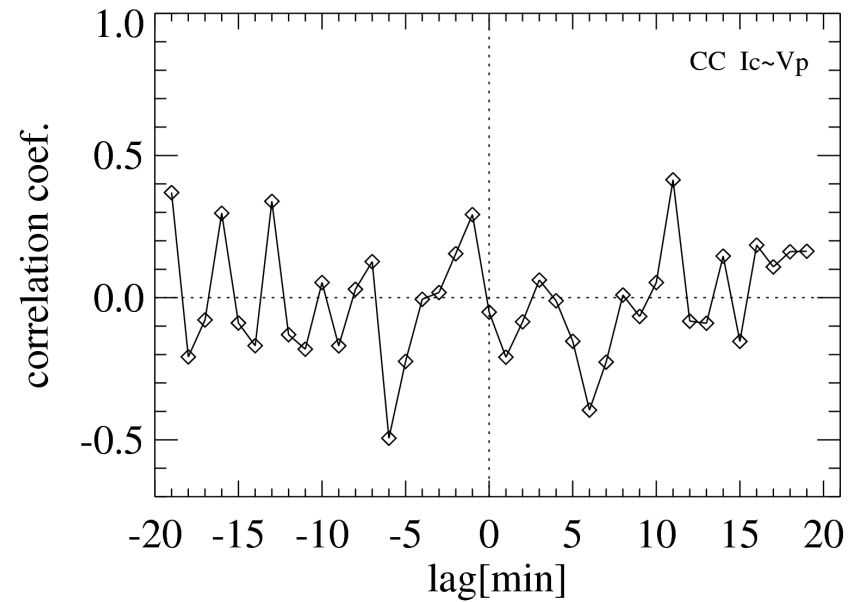
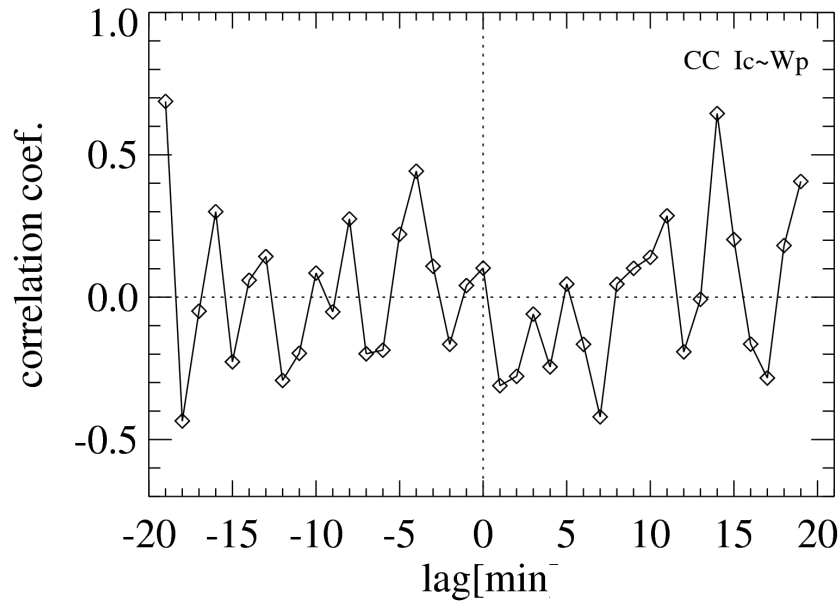
- autocorrelations



statistically significant periods in Ic and vp ~8 min

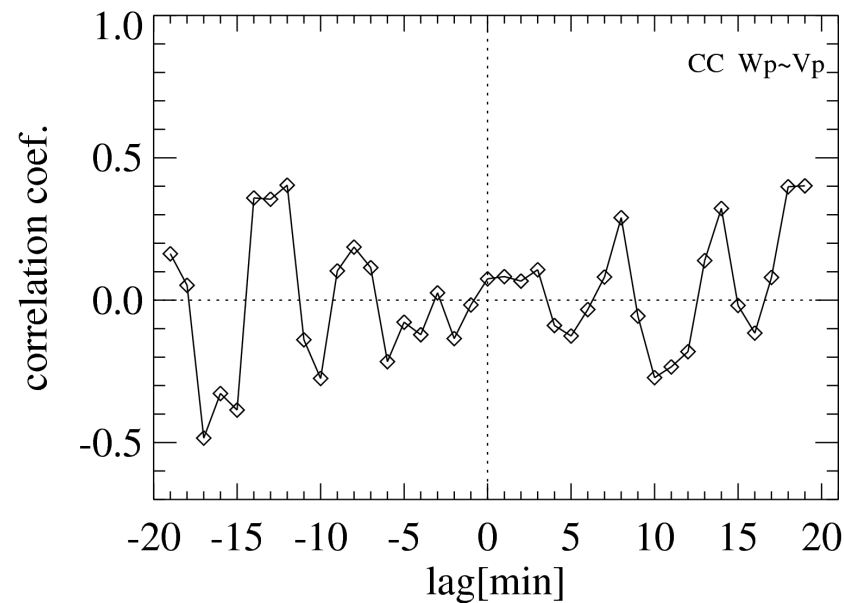
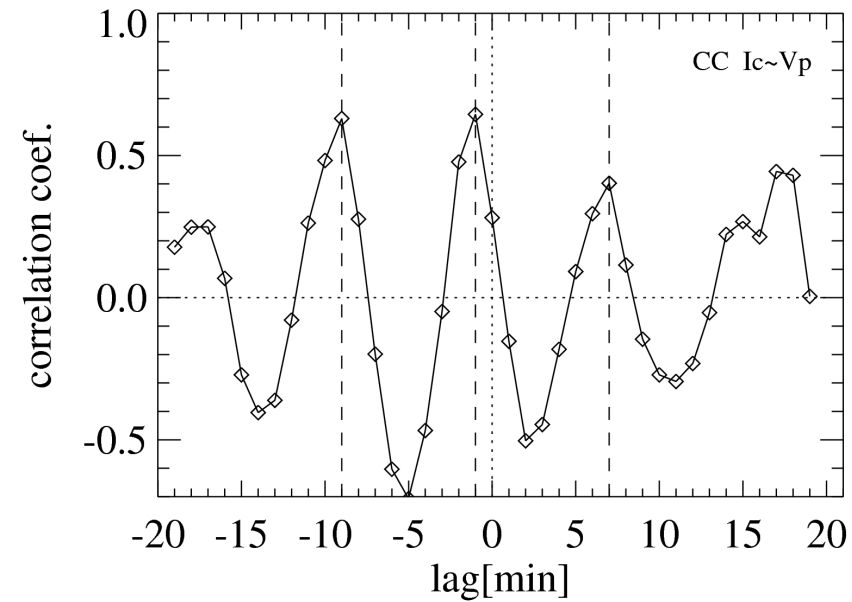
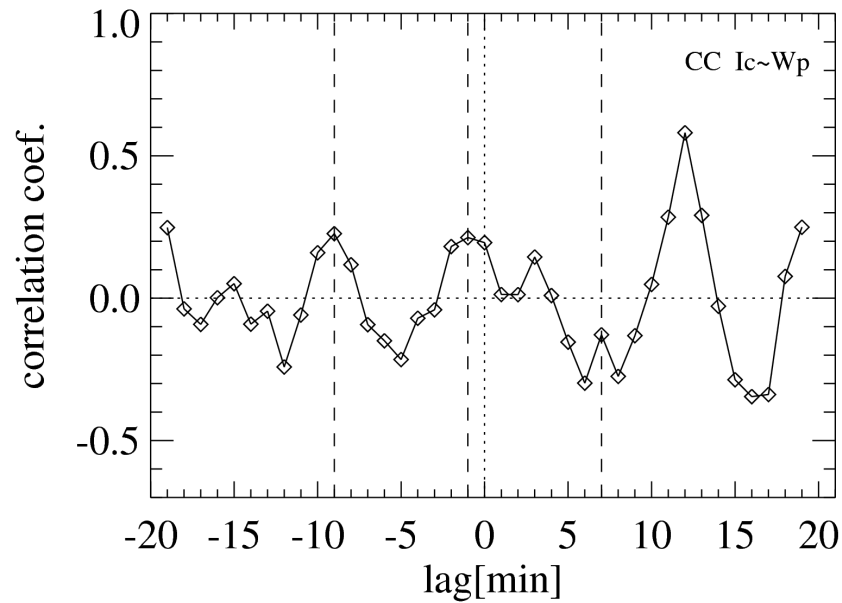


Box B1 - first half (0-35 min) - crosscorrelations



**no
statistically
significant
periods**

Box B1 - second half (36-70 min) - crosscorrelations

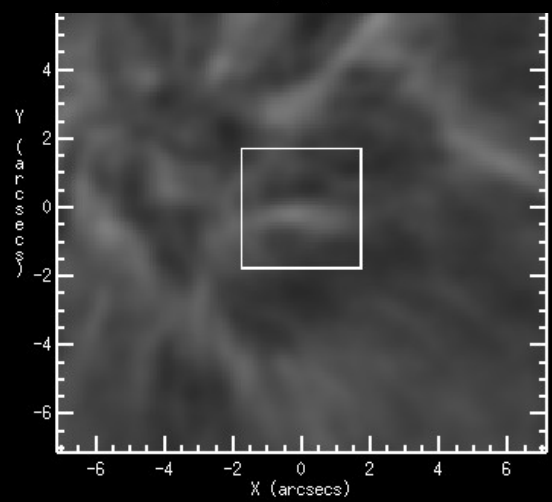
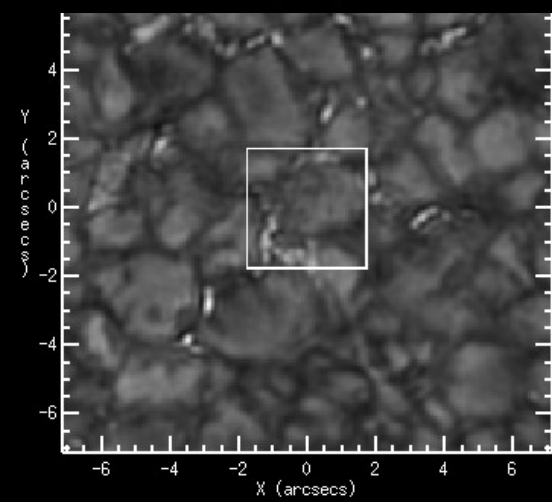
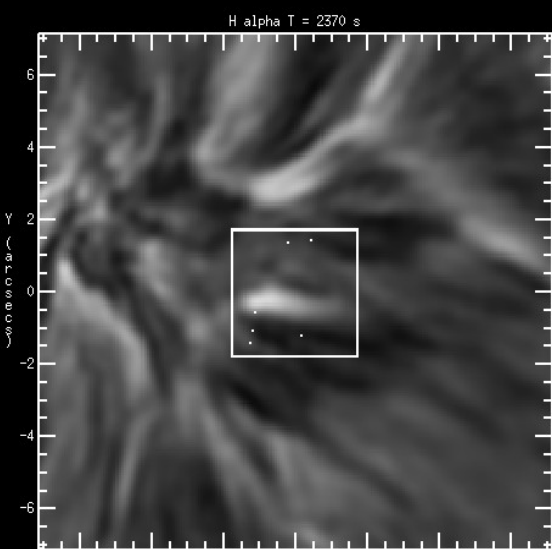
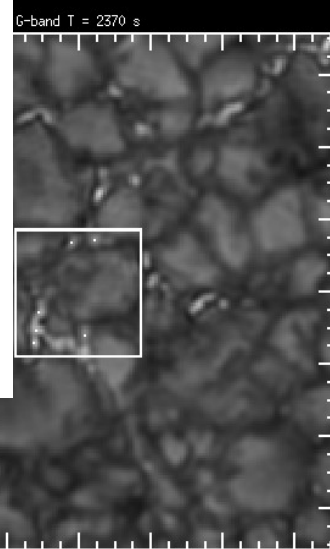
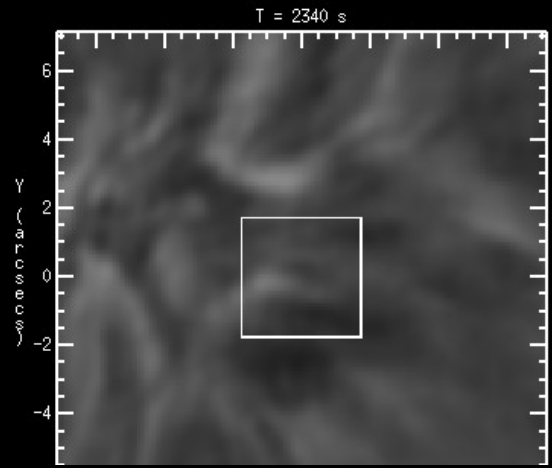
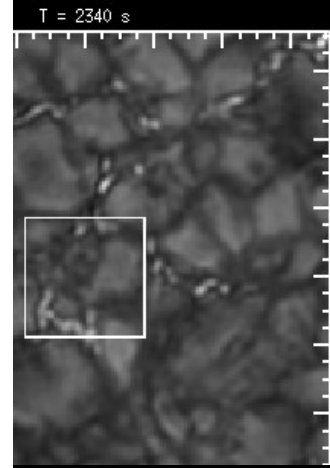
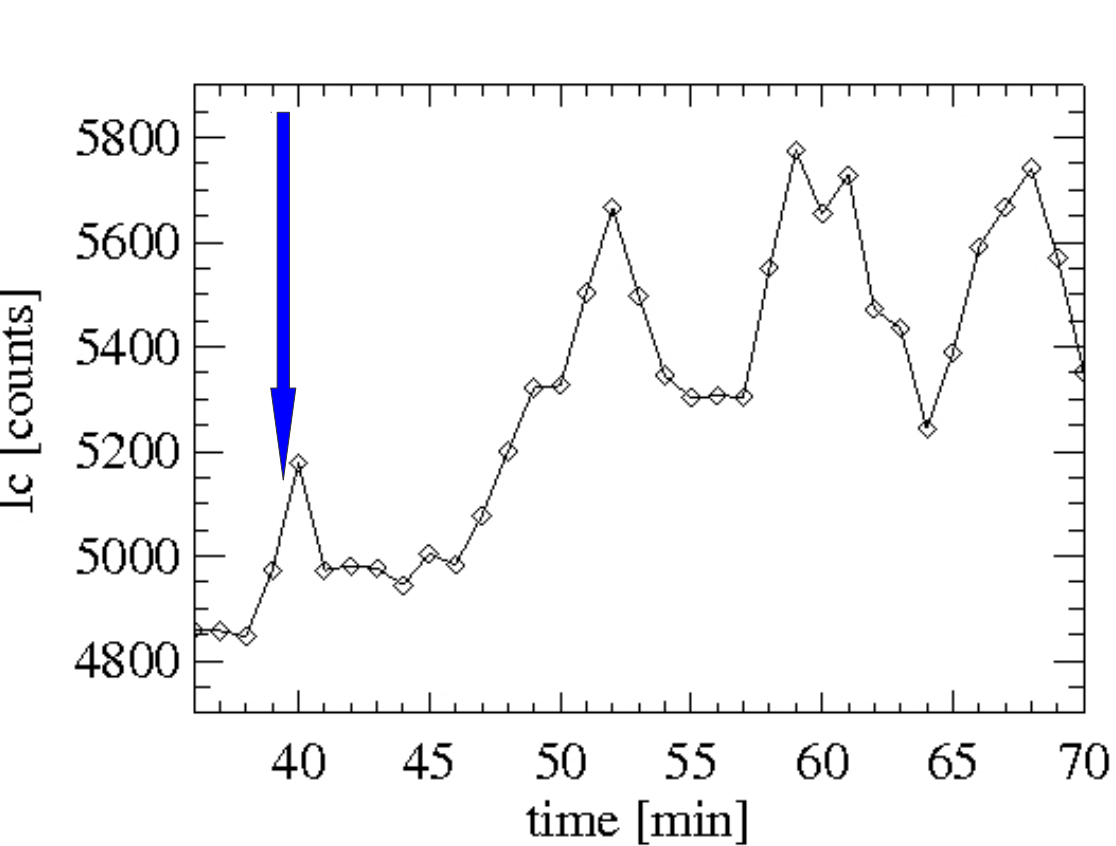


statistically significant correlation between Ic and vp; Ic behind vp ~1 min

Box B1 - findings

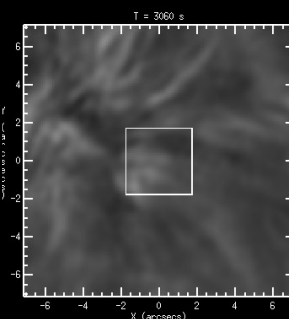
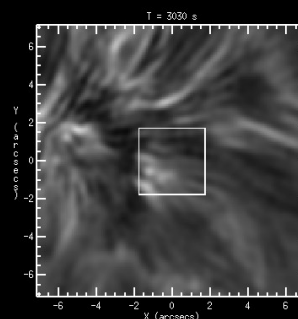
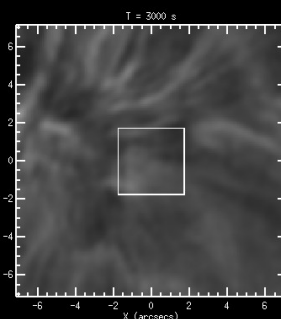
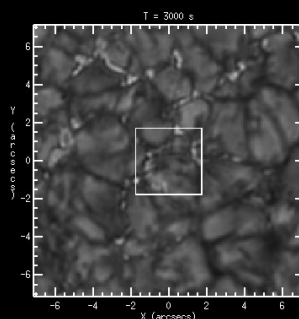
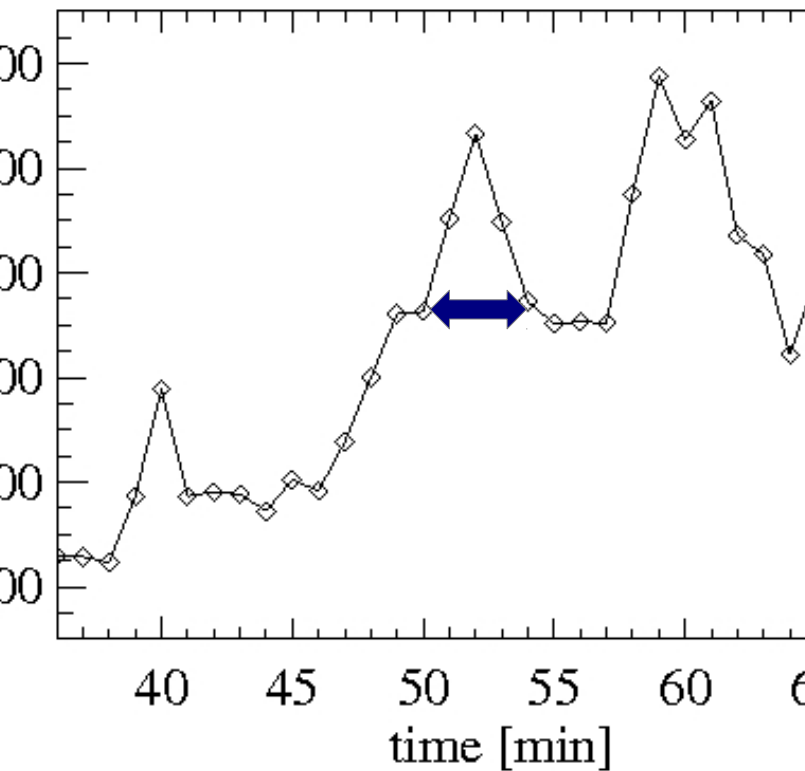
Variations of studied spectral characteristics except wp differ in first and second half of full time span of observation

- ◆ **Full time span** - **ac** - ~8 min period in Ic and vp
 - **cc** - statistically significant correlation between Ic and vp (Ic ~1.5 min behind vp)
- ◆ **First half** - **ac** - no statistically significant
 - **cc** - no statistically significant
- ◆ **Second half** - **ac** - statistically significant ~8 min period in Ic and vp
 - **cc** - statistically significant correlation between Ic and vp (Ic ~2 min behind vp)
 - wp ~ vp possible ~7 min period **?!**
 - Ic ~ wp possible ~8 min period (Ic ~1 resp. ~9 min behind vp); anomalous local maximum at Ic ~12 min behind vp **?!**



EVENT: 39, 39.5 and 40 min

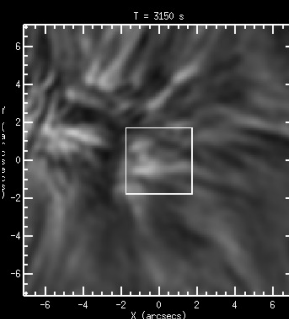
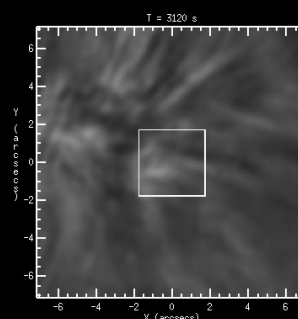
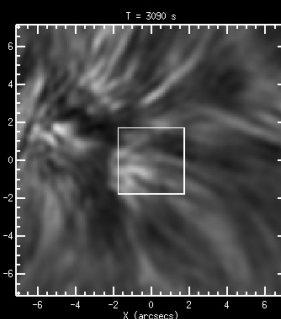
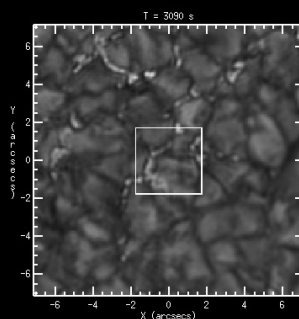
short-lasting brightening



50 min

50.5 min

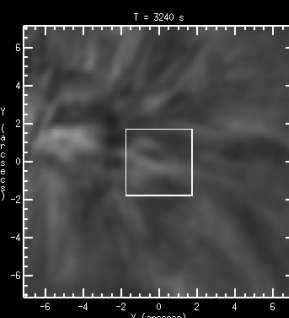
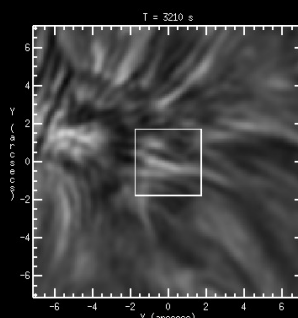
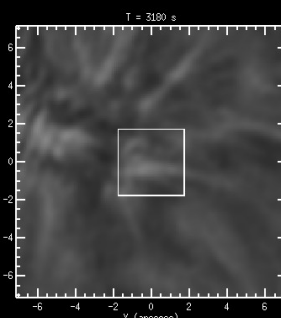
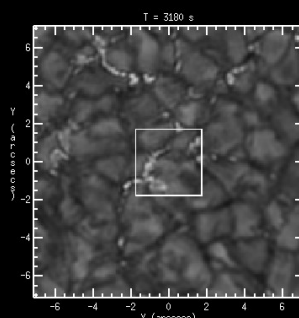
51 min



51.5 min

52 min

52.5 min



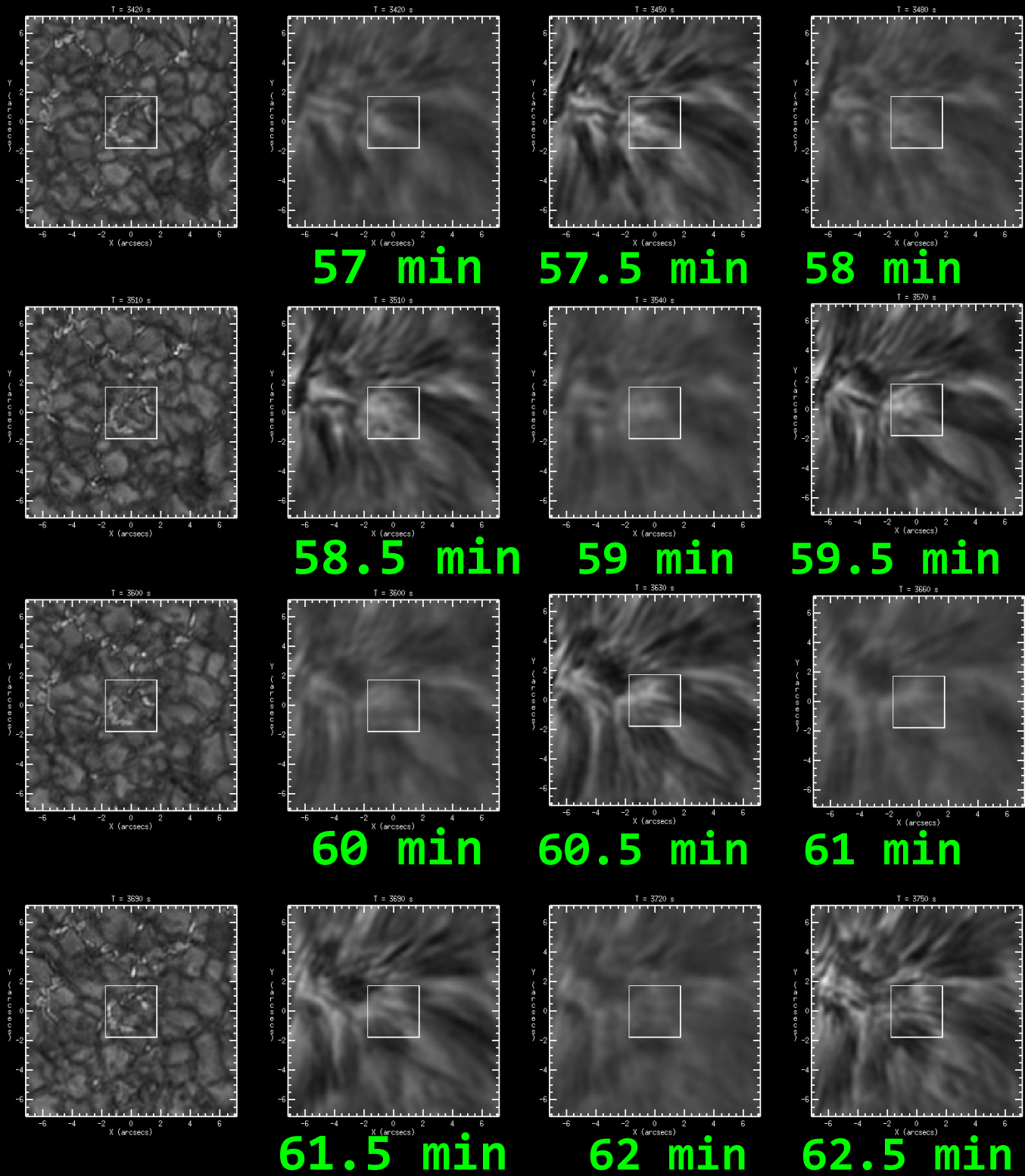
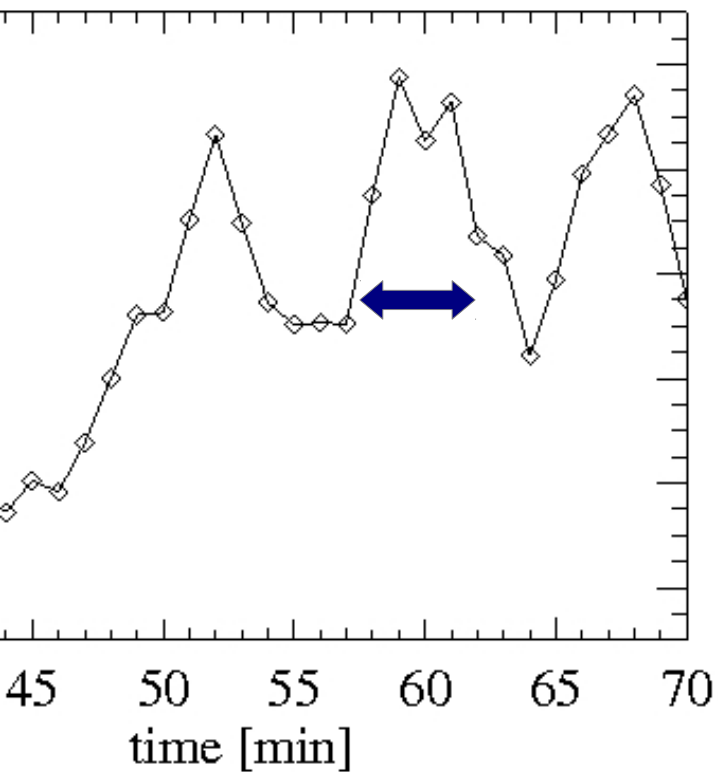
53 min

53.5 min

54 min

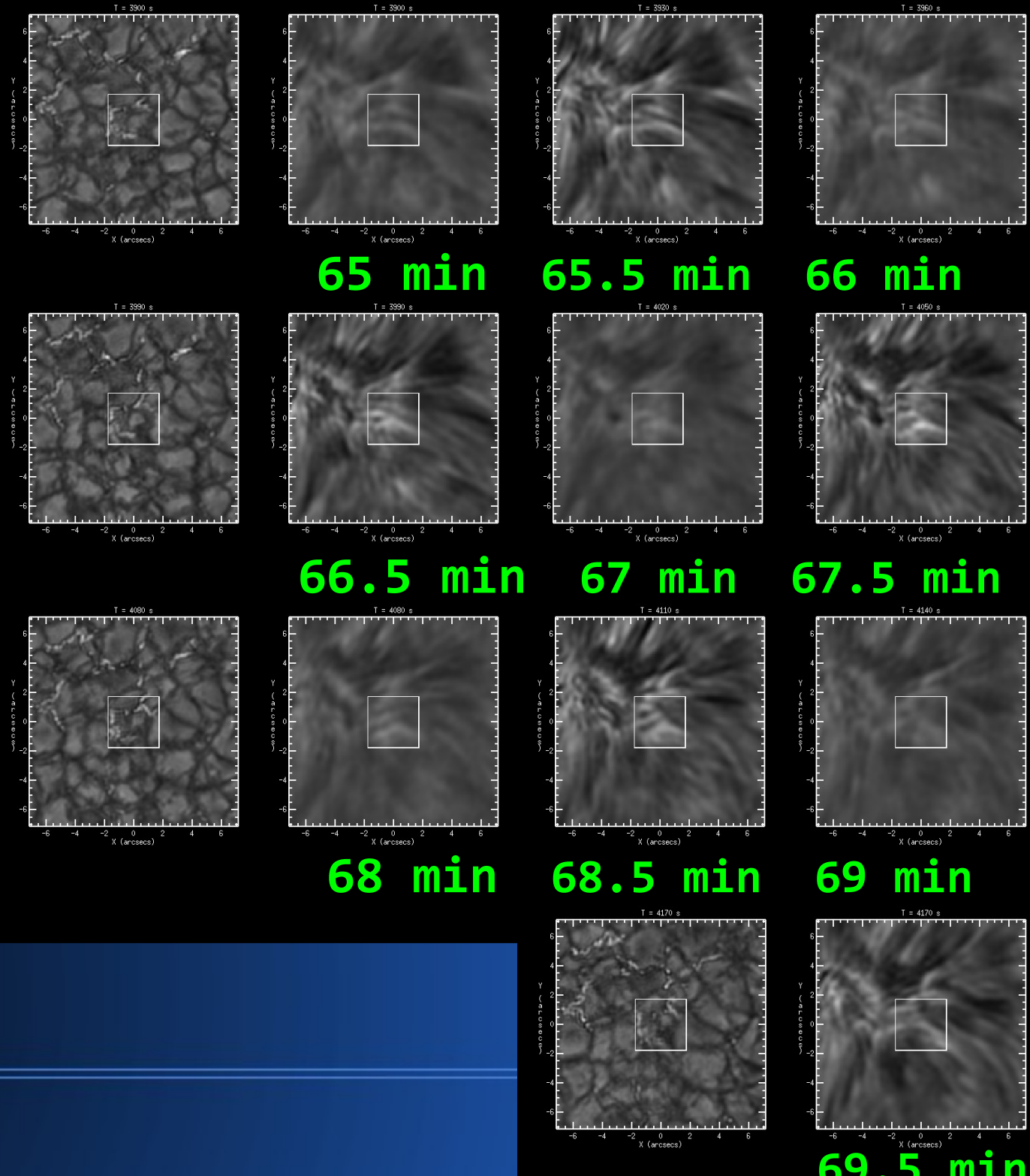
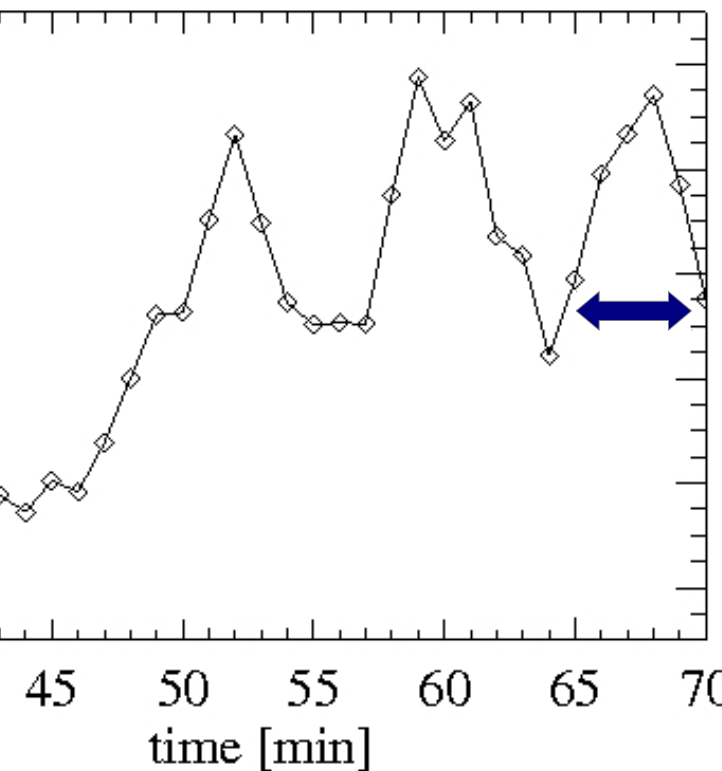
EVENT:

50, 50.5, 51,
51.5, 52, 52.5,
53, 53.5 and 54
min



EVENT:

57, 57.5, 58,
 58.5, 59, 59.5,
 60, 60.5, 61,
 61.5, 62 and
 62.5 min

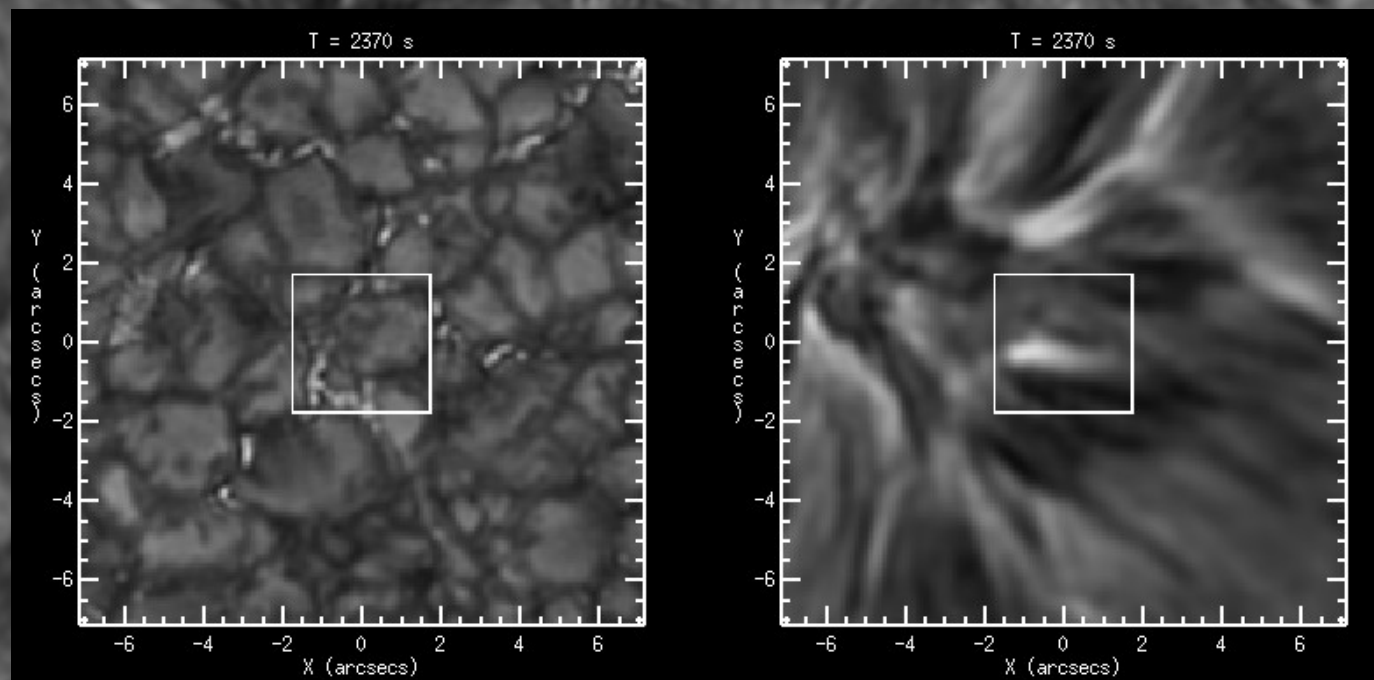


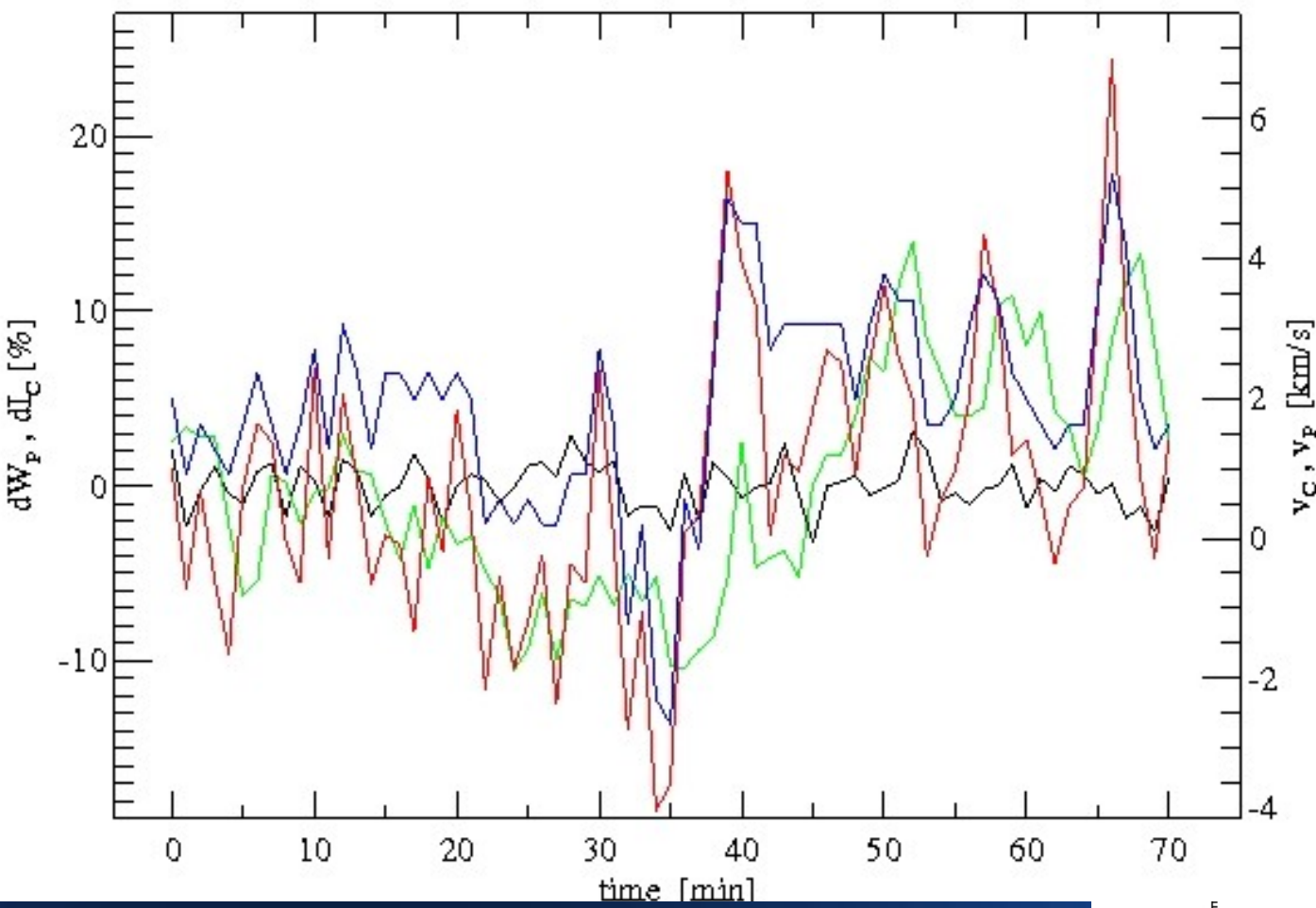
EVENT:

65, 65.5, 66,
66.5, 67, 67.5,
68, 68.5, 69
and 69.5 min

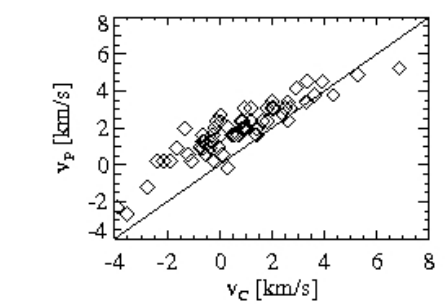
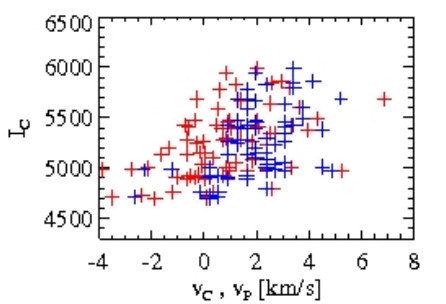
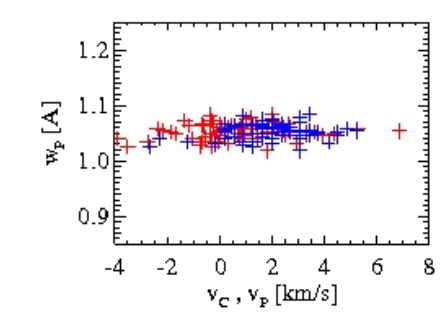
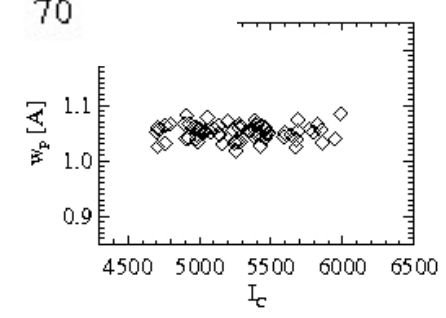
Box B1 – sub-field (50x25)px

time=79



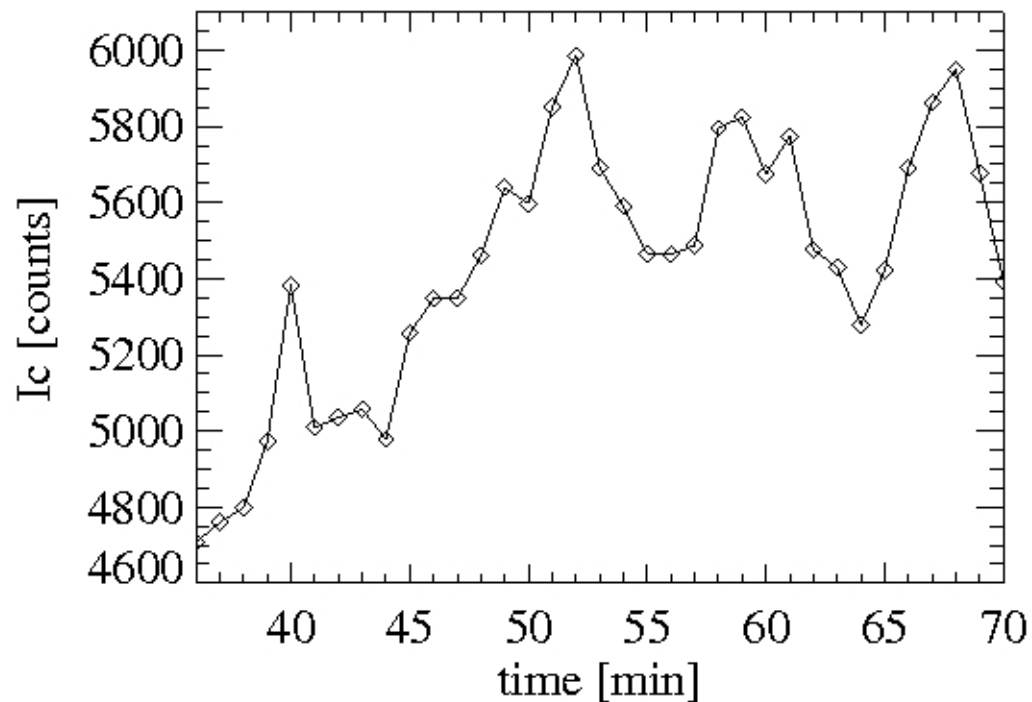


Black - wp
Green - Ic
Blue - vp
Red - vc

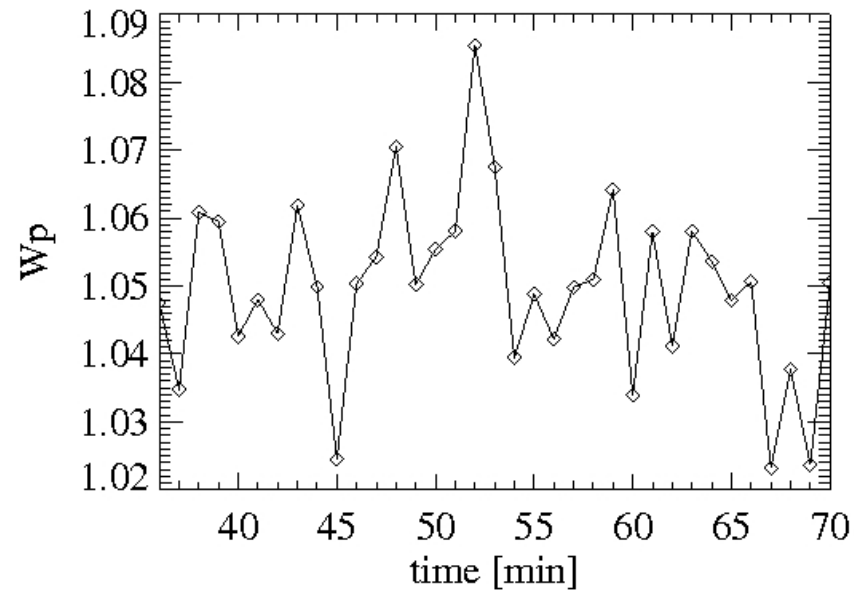
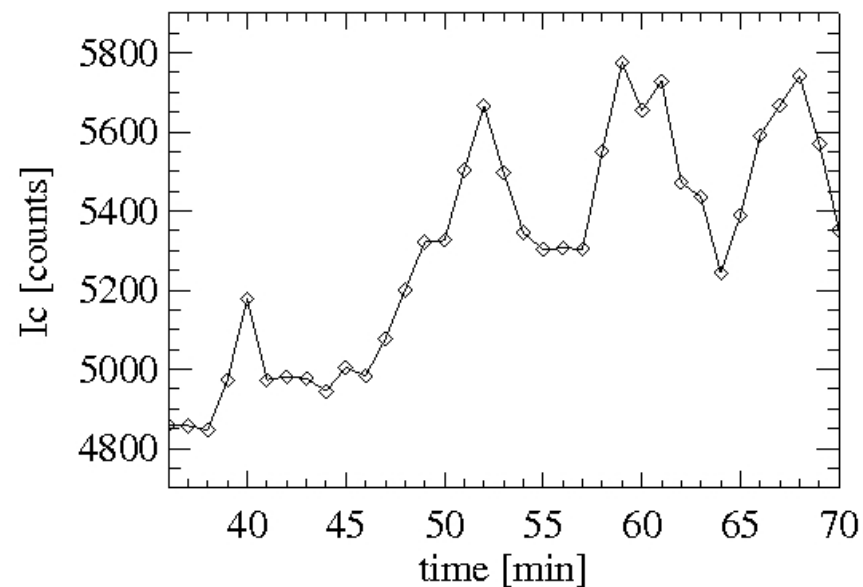
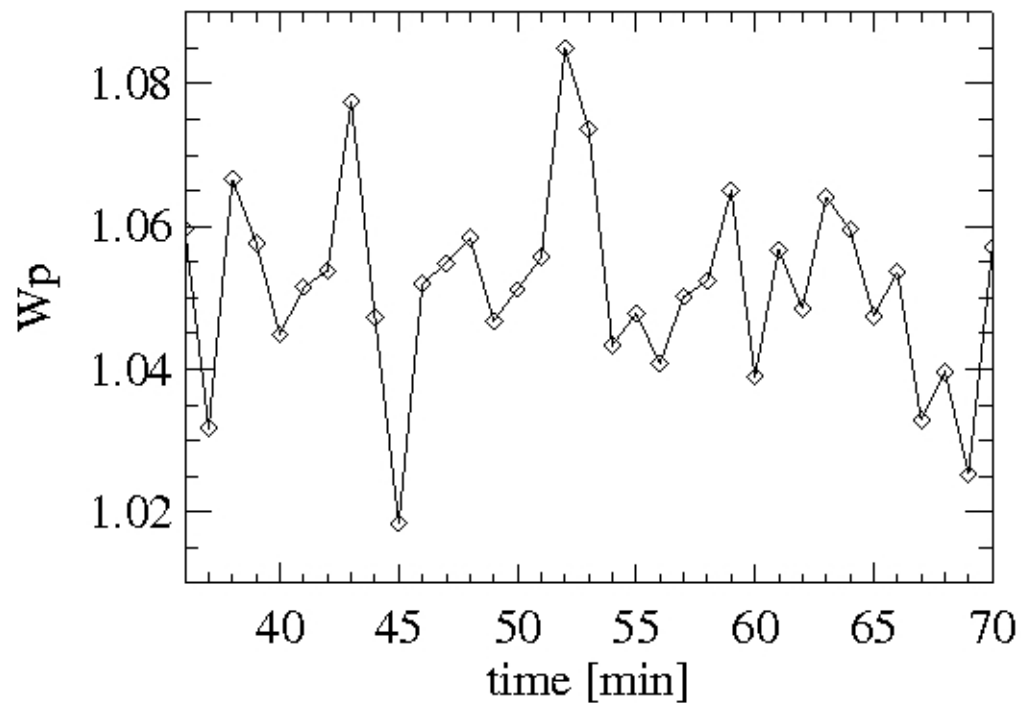


Ic and wp second half of time span

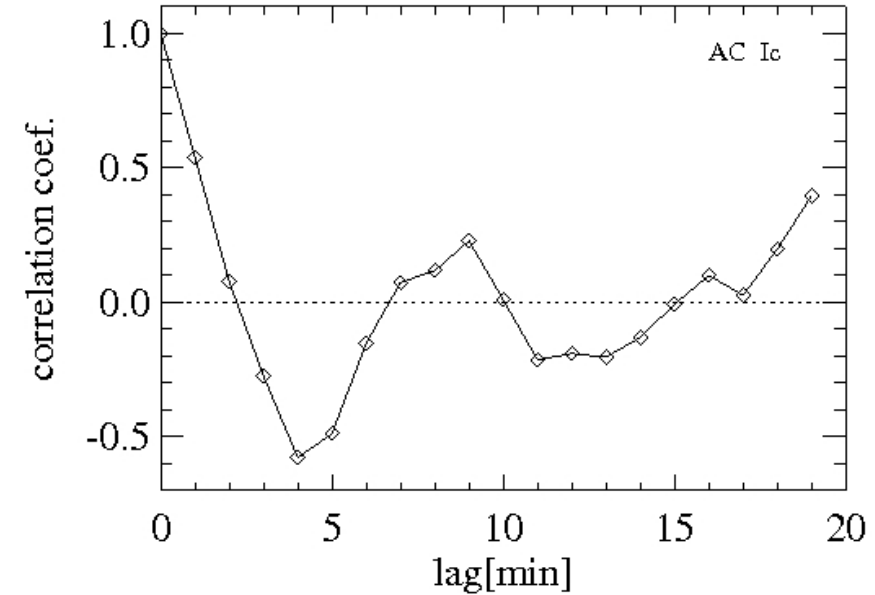
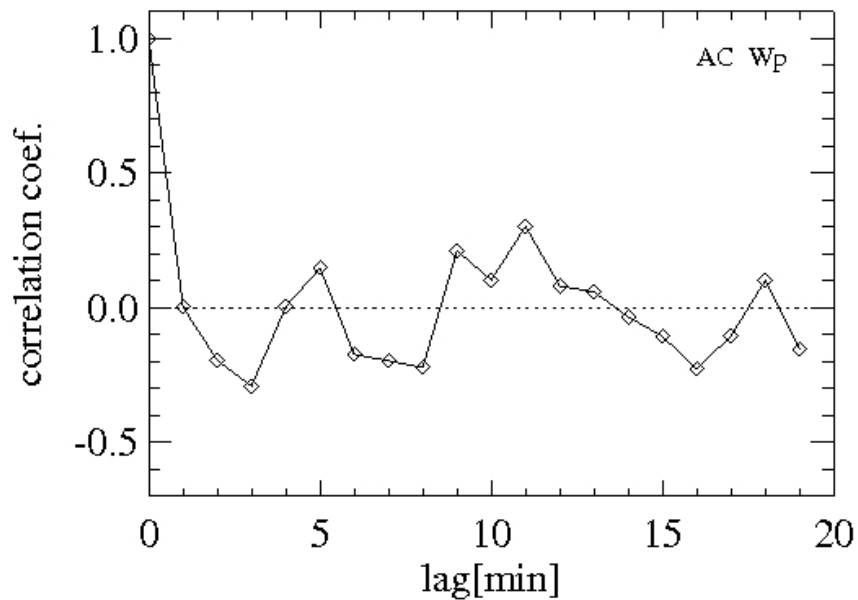
Ic, wp - N1



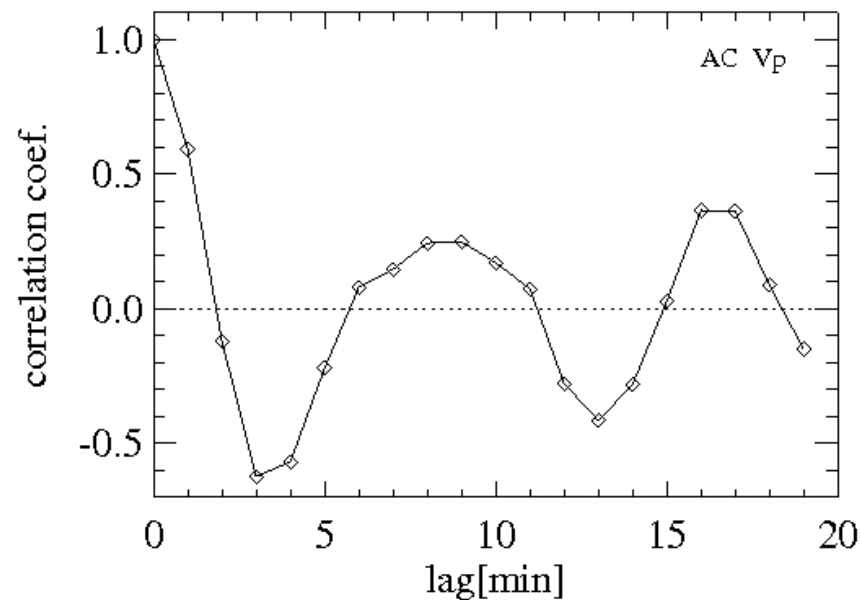
Ic, wp - selection



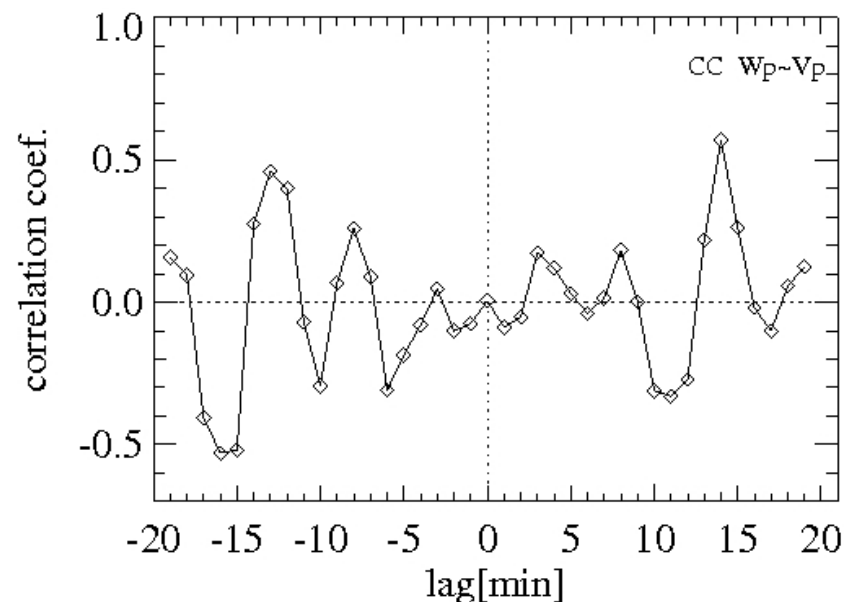
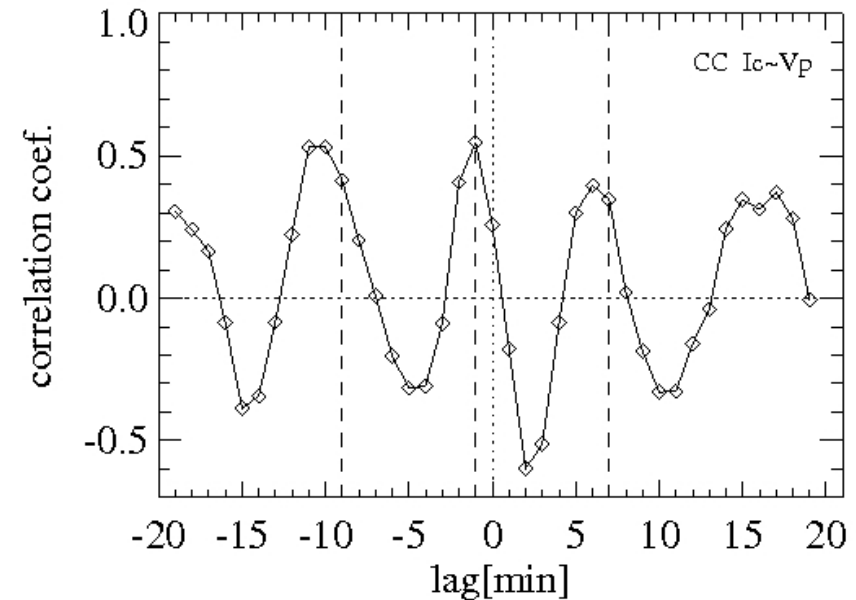
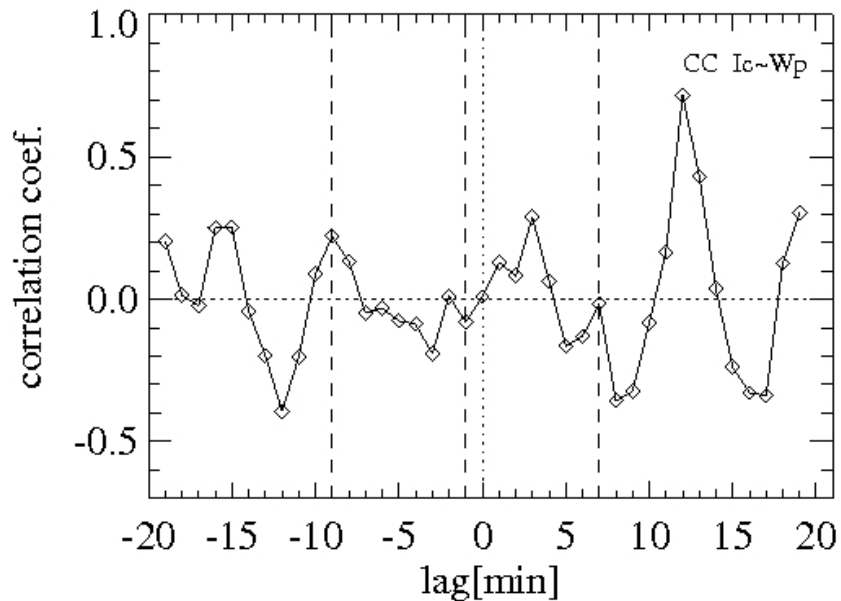
Box B1 (selection) - second half (36-70 min) - autocorrelations



statistically significant periods in Ic and vp ~8 min

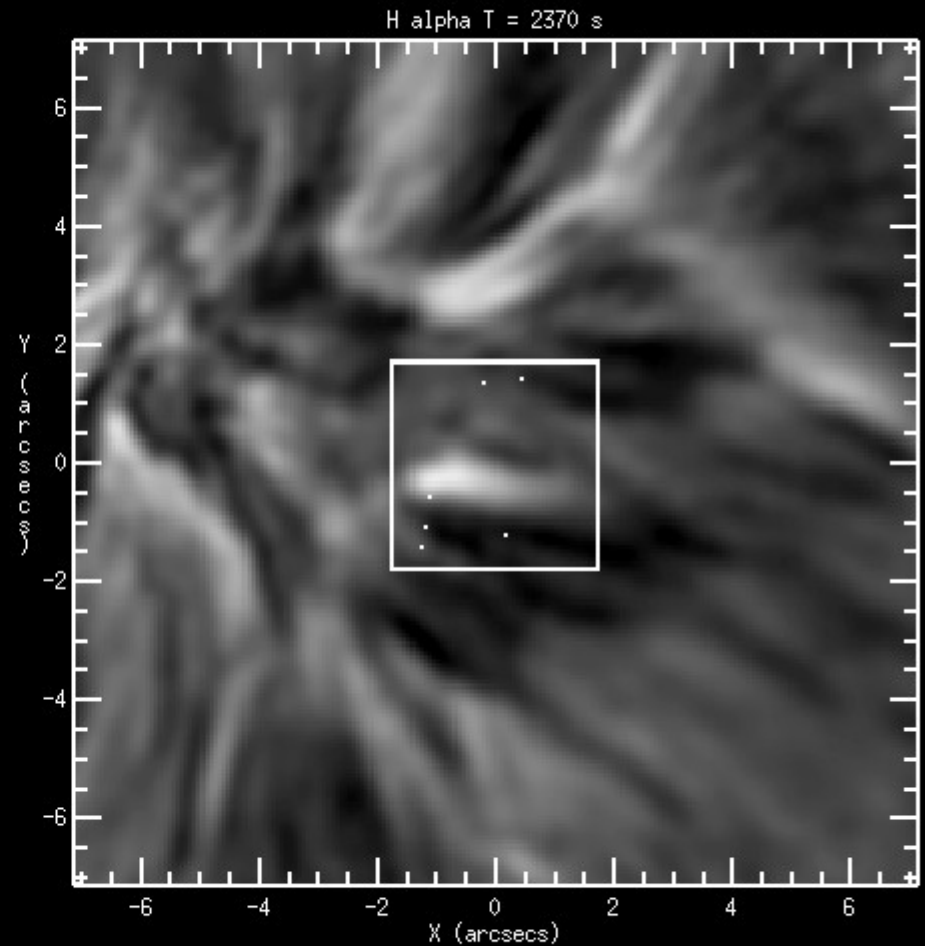
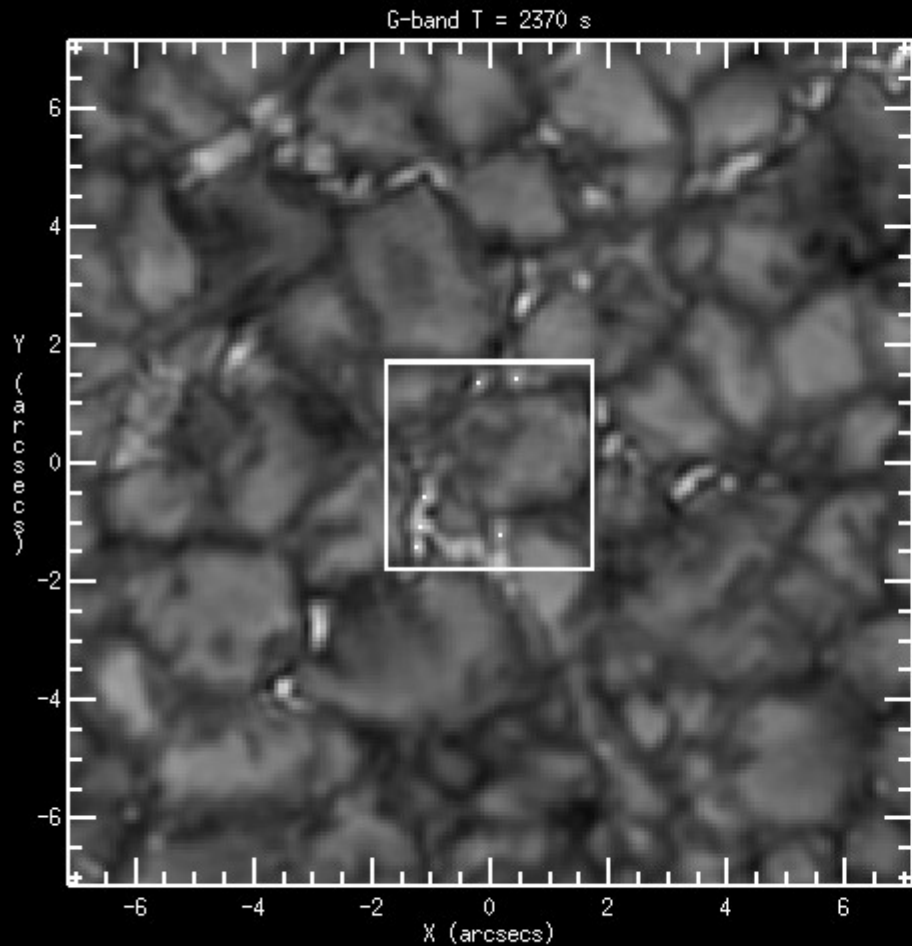


Box B1 (selection) - second half (36-70 min) - crosscorrelations



**statistically
significant
correlation
between I_c
and v_p ; I_c
behind v_p ~1
min**

GBP dynamics and H α response



VIDEO . . .