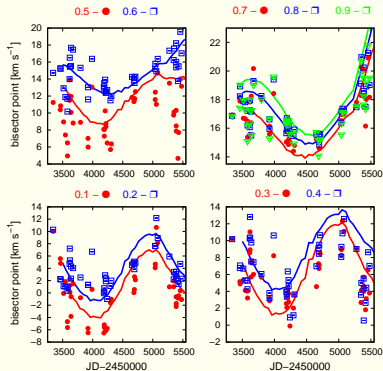
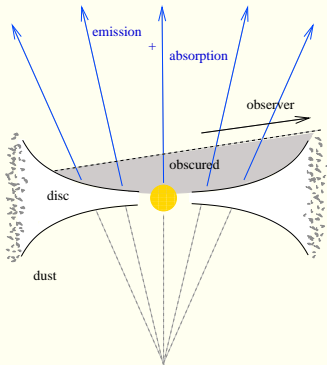


Is a B[e] Star V2028 Cyg a Binary?

J. Polster D. Korčáková V. Votruba P. Škoda M. Šlechta B. Kučerová



Time dependencies of the $H\alpha$ bisectors. Measured points are fitted by the best simulation (the disc containing a dust ring). The line bisectors are plotted for the relative highs 0.1 (wings) – 0.9 (peak).



Sketch of the best fitted model explaining all the observed properties.