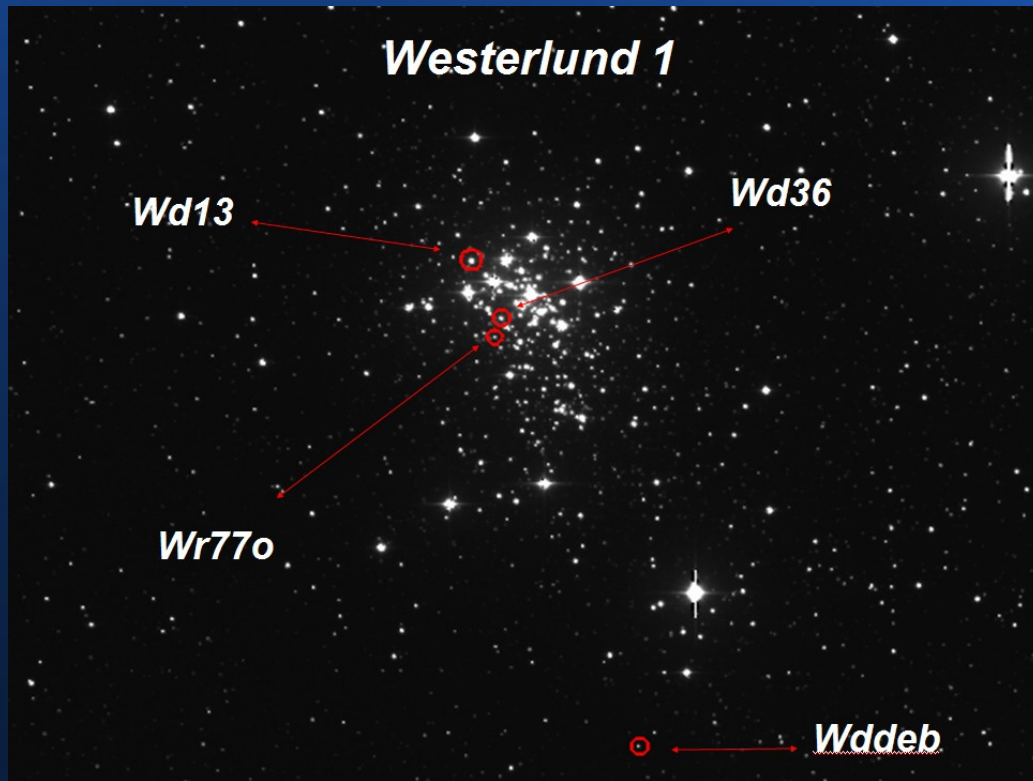


Fundamental Parameters of Four Massive Eclipsing Binaries in Westerlund 1



Aims of the project

- The determination of fundamental parameters of massive stars (masses, radii etc.).
- Testing the evolutionary and formation models.
- The determination of a lower limit for the mass of the magnetar progenitor (Muno et al 2006).

Target

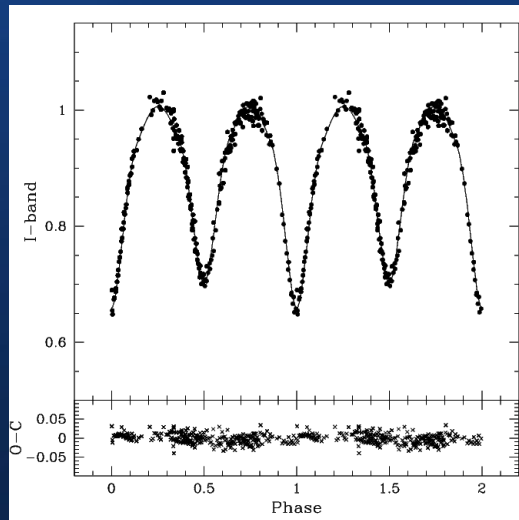
- Westerlund 1

Tools

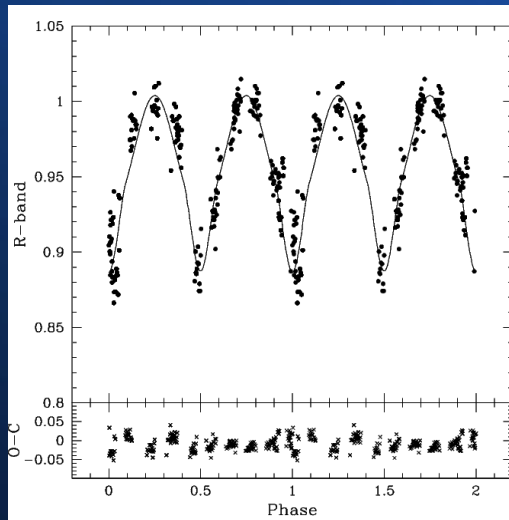
- Eclipsing binaries

The Individual Binaries

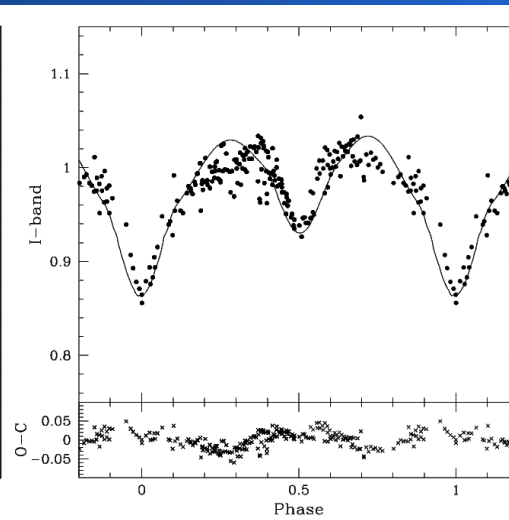
Wd36



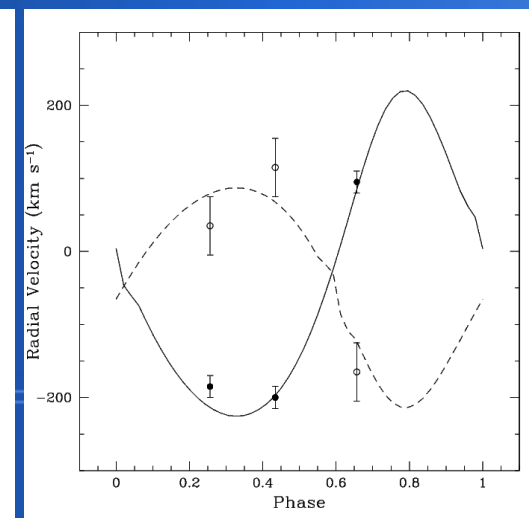
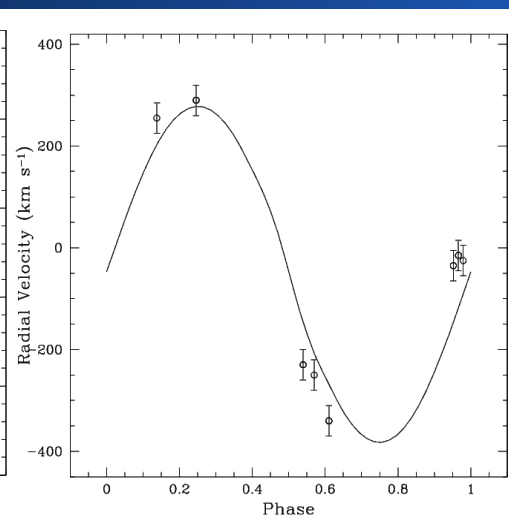
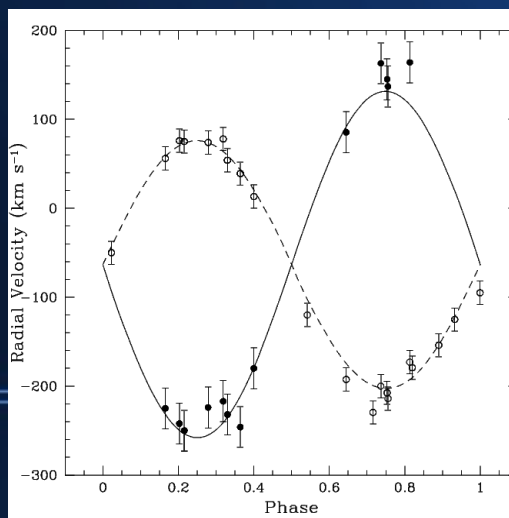
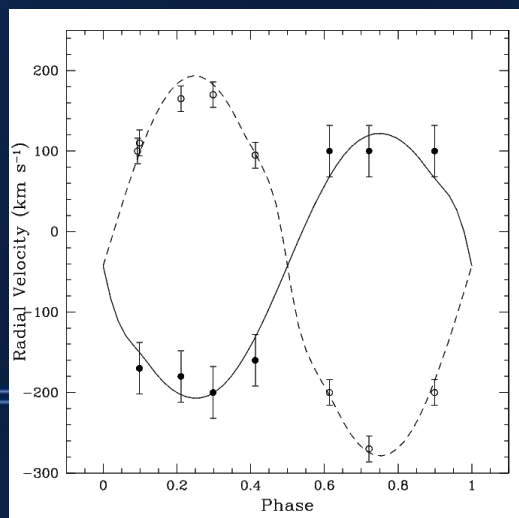
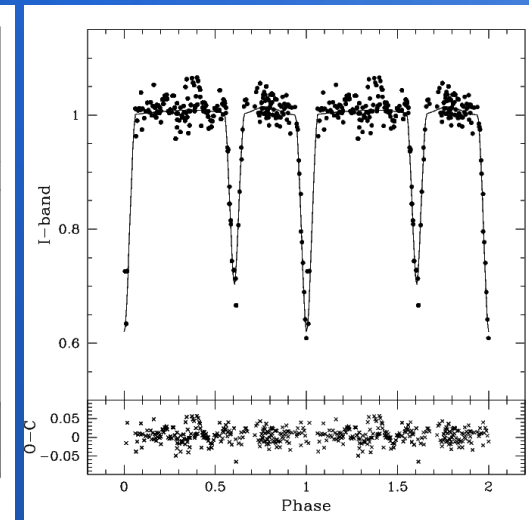
Wd13



WR77o



Wddeb



Finding out more about Westerlund 1

- **COME (E07)**
- **SEE**
- **& ASK HER**

Thank you

